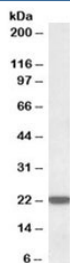


## LMP7 Antibody (R33670)

Catalog No.	Formulation	Size
R33670-100UG	0.5 mg/ml in 1X TBS, pH7.3, with 0.5% BSA (US sourced) and 0.02% sodium azide	100 ug

[Bulk quote request](#)

Availability	1-3 business days
Species Reactivity	Human
Predicted Reactivity	Cow, Dog, Mouse, Pig, Rat
Format	Antigen affinity purified
Host	Goat
Clonality	Polyclonal (goat origin)
Isotype	Goat Ig
Purity	Antigen affinity
Gene ID	5696
Applications	Western Blot : 0.01-0.03ug/ml ELISA (peptide) LOD : 1:8000
Limitations	This LMP7 antibody is available for research use only.



Western blot testing of human liver lysate with LMP7 antibody at 0.01ug/ml. Predicted molecular weight: ~30kDa but can be observed at ~22kDa (PMID: 10878350).

## Description

Additional name(s) for this target protein: Large multifunctional peptidase 7; PSMB8

## Application Notes

Optimal dilution of the LMP7 antibody should be determined by the researcher.

## Immunogen

Amino acids DVSDLLHQYREANQ were used as the immunogen for this LMP7 antibody.

## Storage

Aliquot and store the LMP7 antibody at -20oC.

## References (1)