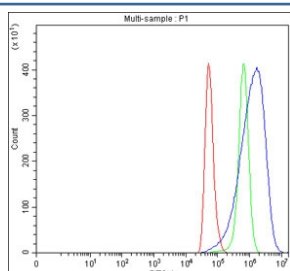


LMO7DN Antibody / LMO7 downstream neighbor protein (RQ8763)

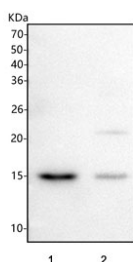
Catalog No.	Formulation	Size
RQ8763	0.5mg/ml if reconstituted with 0.2ml sterile DI water	100 ug

Bulk quote request

Availability	1-3 days
Species Reactivity	Human
Format	Antigen affinity purified
Clonality	Polyclonal (rabbit origin)
Isotype	Rabbit IgG
Purity	Antigen affinity chromatography
Buffer	Lyophilized from 1X PBS with 2% Trehalose
UniProt	F2Z398
Applications	Western Blot : 1-2ug/ml Flow Cytometry : 1-3ug/million cells ELISA : 0.1-0.5ug/ml
Limitations	This LMO7DN antibody is available for research use only.



Flow cytometry testing of fixed and permeabilized human HeLa cells with LMO7DN antibody at 1ug/million cells (blocked with goat sera); Red=cells alone, Green=isotype control, Blue= LMO7DN antibody.



Western blot testing of human 1) HeLa and 2) Caco-2 cell lysate with LMO7DN antibody. Predicted molecular weight ~13 kDa.

Description

LMO7DN (LMO7 Downstream Neighbor) is an RNA Gene, and is affiliated with the lncRNA class.

Application Notes

Optimal dilution of the LMO7DN antibody should be determined by the researcher.

Immunogen

An E.coli-derived human recombinant protein (amino acids M1-S122) was used as the immunogen for the LMO7DN antibody.

Storage

After reconstitution, the LMO7DN Antibody can be stored for up to one month at 4°C. For long-term, aliquot and store at -20°C. Avoid repeated freezing and thawing.