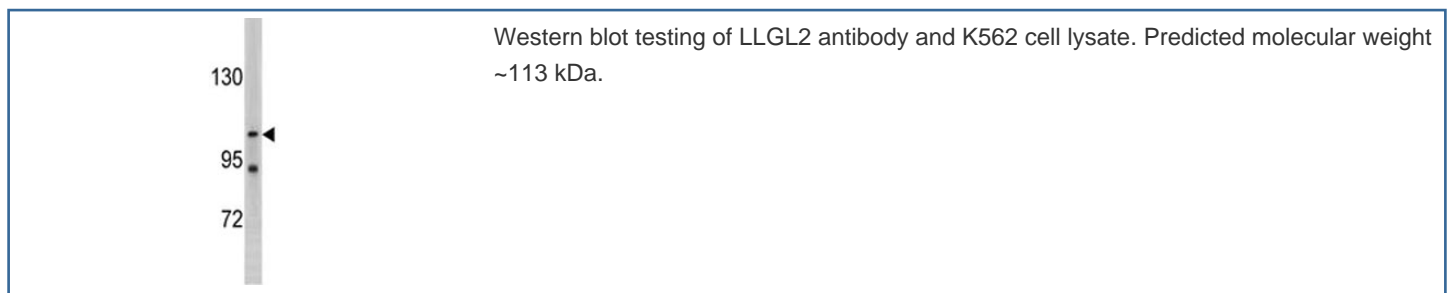


LLGL2 Antibody / HGL (F53917)

Catalog No.	Formulation	Size
F53917-0.4ML	In 1X PBS, pH 7.4, with 0.09% sodium azide	0.4 ml
F53917-0.08ML	In 1X PBS, pH 7.4, with 0.09% sodium azide	0.08 ml

Bulk quote request

Availability	1-3 business days
Species Reactivity	Human
Format	Purified
Host	Rabbit
Clonality	Polyclonal (rabbit origin)
Isotype	Rabbit Ig
Purity	SAS precipitation followed by dialysis in PBS
UniProt	Q6P1M3
Applications	Western Blot : 1:500-1000
Limitations	This LLGL2 antibody is available for research use only.



Description

The lethal (2) giant larvae protein of *Drosophila* / Human giant larvae homolog plays a role in asymmetric cell division, epithelial cell polarity, and cell migration. LLGL2 is a protein similar to lethal (2) giant larvae of *Drosophila*. In fly, the protein's ability to localize cell fate determinants is regulated by the atypical protein kinase C (aPKC). In human, this protein interacts with aPKC-containing complexes and is cortically localized in mitotic cells.

Application Notes

Titration of the LLGL2 antibody may be required due to differences in protocols and secondary/substrate sensitivity.

Immunogen

A portion of amino acids 940-973 from the human protein was used as the immunogen for the LLGL2 antibody.

Storage

Aliquot the LLGL2 antibody and store frozen at -20oC or colder. Avoid repeated freeze-thaw cycles.