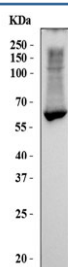


## Liver Carboxylesterase 1 Antibody / CES1 (RQ6606)

Catalog No.	Formulation	Size
RQ6606	0.5mg/ml if reconstituted with 0.2ml sterile DI water	100 ug

**Bulk quote request**

<b>Availability</b>	1-3 business days
<b>Species Reactivity</b>	Human
<b>Format</b>	Antigen affinity purified
<b>Clonality</b>	Polyclonal (rabbit origin)
<b>Isotype</b>	Rabbit IgG
<b>Purity</b>	Antigen affinity purified
<b>Buffer</b>	Lyophilized from 1X PBS with 2% Trehalose
<b>UniProt</b>	P23141
<b>Applications</b>	Western Blot : 1-2ug/ml
<b>Limitations</b>	This Liver Carboxylesterase 1 antibody is available for research use only.



Western blot testing of human HepG2 cell lysate with Liver Carboxylesterase 1 antibody.  
Predicted molecular weight ~63 kDa.

## Description

Liver carboxylesterase 1 also known as carboxylesterase 1 (CES1, hCE-1 or CES1A1) is an enzyme that in humans is encoded by the CES1 gene. This gene encodes a member of the carboxylesterase large family. The family members are responsible for the hydrolysis or transesterification of various xenobiotics, such as cocaine and heroin, and endogenous substrates with ester, thioester, or amide bonds. They may participate in fatty acyl and cholesterol ester metabolism, and may play a role in the blood-brain barrier system. This enzyme is the major liver enzyme and functions in liver drug clearance. Mutations of this gene cause carboxylesterase 1 deficiency. Three transcript variants encoding three different isoforms have been found for this gene.

## Application Notes

Optimal dilution of the Liver Carboxylesterase 1 antibody should be determined by the researcher.

## Immunogen

Amino acids TNLFAKKAVEKPPQTEHIEL from the human protein were used as the immunogen for the Liver Carboxylesterase 1 antibody.

## Storage

After reconstitution, the Liver Carboxylesterase 1 antibody can be stored for up to one month at 4oC. For long-term, aliquot and store at -20oC. Avoid repeated freezing and thawing.