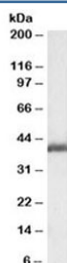


## LIS1 Antibody / Lissencephaly 1 (R36182)

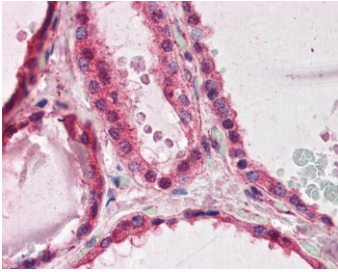
Catalog No.	Formulation	Size
R36182-100UG	0.5 mg/ml in 1X TBS, pH7.3, with 0.5% BSA (US sourced) and 0.02% sodium azide	100 ug

[Bulk quote request](#)

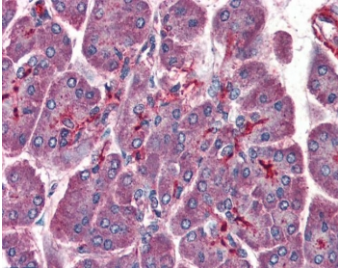
Availability	1-3 business days
Species Reactivity	Human, Rat
Format	Antigen affinity purified
Clonality	Polyclonal (goat origin)
Isotype	Goat Ig
Purity	Antigen affinity
UniProt	P43034
Gene ID	5048
Localization	Cytoplasmic
Applications	Western Blot : 0.1-0.3ug/ml IHC (FFPE) : 3.75ug/ml ELISA (peptide) LOD : 1:32000
Limitations	This LIS1 antibody is available for research use only.



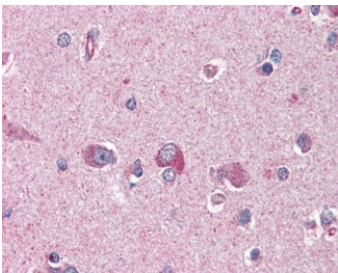
Western blot testing of rat ovary lysate with LIS1 antibody at 0.1ug/ml. Predicted molecular weight: 46 kDa.



IHC testing of FFPE human thyroid tissue with LIS1 antibody at 3.75ug/ml. Required HIER: steamed antigen retrieval with pH6 citrate buffer; AP-staining.



IHC testing of FFPE human pancreas tissue with LIS1 antibody at 3.75ug/ml. Required HIER: steamed antigen retrieval with pH6 citrate buffer; AP-staining.



IHC testing of FFPE human cortex (brain) tissue with LIS1 antibody at 3.75ug/ml. Required HIER: steamed antigen retrieval with pH6 citrate buffer; AP-staining.

## Description

Additional name(s) for this target protein: Lissencephaly 1; PAFAH1B1; Platelet-activating factor acetylhydrolase, isoform 1B

## Application Notes

Optimal dilution of the LIS1 antibody should be determined by the researcher.

## Immunogen

Amino acids TGSVDQTVKVWECR were used as the immunogen for this LIS1 antibody.

## Storage

Aliquot and store the LIS1 antibody at -20oC.