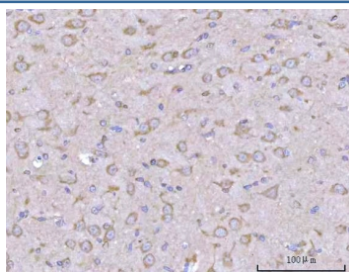


Liprin alpha 2 Antibody / PPFIA2 (RQ8174)

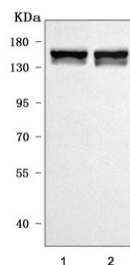
Catalog No.	Formulation	Size
RQ8174	0.5mg/ml if reconstituted with 0.2ml sterile DI water	100 ug

Bulk quote request

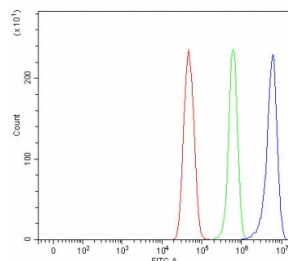
Availability	1-3 business days
Species Reactivity	Human, Mouse, Rat
Format	Antigen affinity purified
Clonality	Polyclonal (rabbit origin)
Isotype	Rabbit IgG
Purity	Antigen affinity purified
Buffer	Lyophilized from 1X PBS with 2% Trehalose
UniProt	O75334
Localization	Cytoplasm, cell surface
Applications	Western Blot : 0.5-1ug/ml Immunohistochemistry (FFPE) : 2-5ug/ml Flow Cytometry : 1-3ug/million cells Direct ELISA : 0.1-0.5ug/ml
Limitations	This Liprin alpha 2 antibody is available for research use only.



IHC staining of FFPE rat brain tissue with Liprin alpha 2 antibody. HIER: boil tissue sections in pH8 EDTA for 20 min and allow to cool before testing.



Western blot testing of 1) rat brain and 2) mouse brain tissue lysate with Liprin alpha 2 antibody. Predicted molecular weight ~143 KDa.



Flow cytometry testing of fixed and permeabilized human U-251 cells with Liprin alpha 2 antibody at 1ug/million cells (blocked with goat sera); Red=cells alone, Green=isotype control, Blue= Liprin alpha 2 antibody.

Description

The protein encoded by this gene is a member of the LAR protein-tyrosine phosphatase-interacting protein (liprin) family. Liprins interact with members of LAR family of transmembrane protein tyrosine phosphatases, which are known to be important for axon guidance and mammary gland development. It has been proposed that liprins are multivalent proteins that form complex structures and act as scaffolds for the recruitment and anchoring of LAR family of tyrosine phosphatases. This protein has been shown to bind the calcium/calmodulin-dependent serine protein kinase (MAGUK family) protein (also known as CASK) and proposed to regulate higher-order brain functions in mammals. Alternative splicing results in multiple transcript variants

Application Notes

Optimal dilution of the Liprin alpha 2 antibody should be determined by the researcher.

Immunogen

E. coli-derived recombinant human protein (amino acids E221-C1257) was used as the immunogen for the Liprin alpha 2 antibody.

Storage

After reconstitution, the Liprin alpha 2 antibody can be stored for up to one month at 4°C. For long-term, aliquot and store at -20°C. Avoid repeated freezing and thawing.