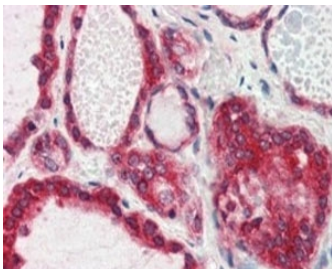


Lipin 3 Antibody (R34568)

Catalog No.	Formulation	Size
R34568-100UG	0.5 mg/ml in 1X TBS, pH7.3, with 0.5% BSA (US sourced) and 0.02% sodium azide	100 ug

[Bulk quote request](#)

Availability	1-3 business days
Species Reactivity	Human
Format	Antigen affinity purified
Host	Goat
Clonality	Polyclonal (goat origin)
Isotype	Goat Ig
Purity	Antigen affinity
Gene ID	64900
Applications	Immunohistochemistry (FFPE) : 2-3ug/ml ELISA (peptide) LOD : 1:64000
Limitations	This Lipin 3 antibody is available for research use only.



IHC testing of FFPE human thyroid gland with Lipin 3 antibody at 2.5ug/ml. HIER: steamed with pH6 citrate buffer, AP-staining.

Description

Additional name(s) for this target protein: LPIN3

Application Notes

Optimal dilution of the Lipin 3 antibody should be determined by the researcher.

Immunogen

Amino acids KPKQKEDAVATD were used as the immunogen for this Lipin 3 antibody.

Storage

Aliquot and store the Lipin 3 antibody at -20oC.