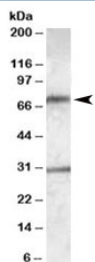


## LIPG Antibody (R35611)

Catalog No.	Formulation	Size
R35611-100UG	0.5 mg/ml in 1X TBS, pH7.3, with 0.5% BSA (US sourced) and 0.02% sodium azide	100 ug

[Bulk quote request](#)

<b>Availability</b>	1-3 business days
<b>Species Reactivity</b>	Human
<b>Format</b>	Antigen affinity purified
<b>Host</b>	Goat
<b>Clonality</b>	Polyclonal (goat origin)
<b>Isotype</b>	Goat Ig
<b>Purity</b>	Antigen affinity
<b>Gene ID</b>	9388
<b>Applications</b>	Western Blot : 0.3-1ug/ml ELISA (peptide) LOD : 1:16000
<b>Limitations</b>	This LIPG antibody is available for research use only.



Western blot testing of human liver lysate with LIPG antibody at 0.3ug/ml. Predicted molecular weight: 57kDa but routinely observed at ~70kDa. Both observed bands are blocked by addition of immunizing peptide.

### Description

Additional name(s) for this target protein: Endothelial lipase

### Application Notes

Optimal dilution of the LIPG antibody should be determined by the researcher.

### Immunogen

Amino acids RFNLRTSKDPEHEG were used as the immunogen for this LIPG antibody.

## Storage

Aliquot and store the LIPG antibody at -20oC.

## References (1)