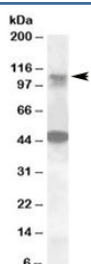


LIP1 Antibody (R36041)

Catalog No.	Formulation	Size
R36041-100UG	0.5 mg/ml in 1X TBS, pH7.3, with 0.5% BSA (US sourced) and 0.02% sodium azide	100 ug

[Bulk quote request](#)

Availability	1-3 business days
Species Reactivity	Human
Format	Antigen affinity purified
Clonality	Polyclonal (goat origin)
Isotype	Goat Ig
Purity	Antigen affinity
Gene ID	114790
Applications	Western Blot : 0.3-1ug/ml ELISA (peptide) LOD : 1:64000
Limitations	This LIP1 antibody is available for research use only.



Western blot testing of human ovary lysate with LIP1 antibody at 0.5ug/ml. The expected ~110kDa band and the additional ~48kDa band are both blocked by the immunizing peptide.

Description

Additional name(s) for this target protein: Serine/threonine kinase 11 interacting protein, LIP1, LKB1IP

Application Notes

Optimal dilution of the LIP1 antibody should be determined by the researcher.

Immunogen

Amino acids SRGTPNRERKQGEQS were used as the immunogen for this LIP1 antibody.

Storage

Aliquot and store the LIP1 antibody at -20oC.