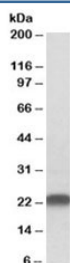


## LIN7B Antibody (R33108)

Catalog No.	Formulation	Size
R33108-100UG	0.5 mg/ml in 1X TBS, pH7.3, with 0.5% BSA (US sourced) and 0.02% sodium azide	100 ug

[Bulk quote request](#)

Availability	1-3 business days
Species Reactivity	Human, Mouse, Rat
Predicted Reactivity	Cow, Dog, Pig
Format	Antigen affinity purified
Host	Goat
Clonality	Polyclonal (goat origin)
Isotype	Goat Ig
Purity	Antigen affinity
Gene ID	64130
Applications	Western Blot : 0.5-2ug/ml ELISA (peptide) LOD : 1:32000
Limitations	This LIN7B antibody is available for research use only.



Western blot testing of rat brain lysate with LIN7B antibody at 0.5ug/ml. Predicted molecular weight: 23kDa.

## Description

Additional name(s) for this target protein: Lin-7 homolog B

## Application Notes

Optimal dilution of the LIN7B antibody should be determined by the researcher.

## Immunogen

Amino acids AALVEPLGLERDVS were used as the immunogen for this LIN7B antibody.

## Storage

Aliquot and store the LIN7B antibody at -20oC.