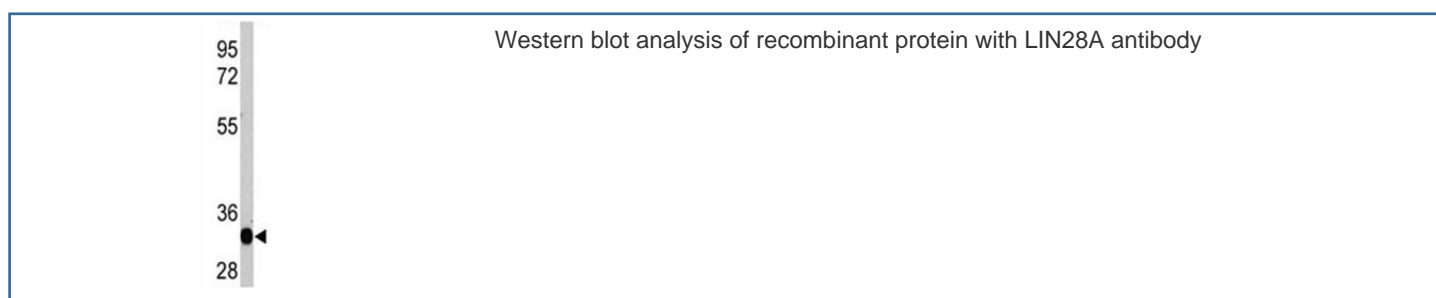


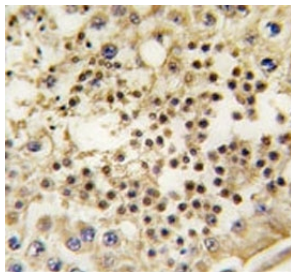
LIN28A Antibody [clone 55CT58.12.1] (F40207)

Catalog No.	Formulation	Size
F40207-0.4ML	In 1X PBS, pH 7.4, with 0.09% sodium azide	0.4 ml
F40207-0.08ML	In 1X PBS, pH 7.4, with 0.09% sodium azide	0.08 ml

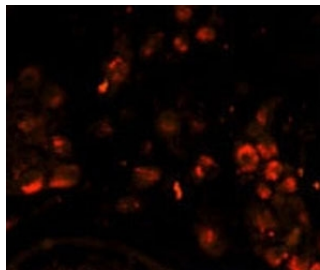
[Bulk quote request](#)

Availability	1-3 business days
Species Reactivity	Human
Format	Purified
Host	Mouse
Clonality	Monoclonal (mouse origin)
Isotype	Mouse IgG1, k
Clone Name	55CT58.12.1
Purity	Purified
UniProt	Q9H9Z2
Applications	Western Blot : 1:200-1:2000 IHC (Paraffin) : 1:50-1:200 Immunofluorescence : 1:10-1:50
Limitations	This LIN28A antibody is available for research use only.





IHC analysis of FFPE human testis tissue stained with LIN28A antibody



Immunofluorescence analysis of LIN28A antibody with paraffin-embedded human testis tissue. Primary antibody was followed by PE-conjugated goat anti-mouse IgG. PE emits orange fluorescence.

Description

LIN28A is a translational enhancer that drives specific mRNAs to polysomes and increases the efficiency of protein synthesis. Its association with the translational machinery and target mRNAs results in an increased number of initiation events per molecule of mRNA and, indirectly, in mRNA stabilization. Binds IGF2 mRNA, MYOD1 mRNA, ARBP/36B4 ribosomal protein mRNA and its own mRNA. Essential for skeletal muscle differentiation program through the translational up-regulation of IGF2 expression (By similarity). Suppressor of microRNA (miRNA) biogenesis, including that of let-7, miR107, miR-143 and miR-200c. Specifically binds miRNA precursors (pre-miRNAs), recognizing an 5'-GGAG-3' motif found in pre-miRNA terminal loop, and recruits ZCCHC11/TUT4 uridylyltransferase. This results in the terminal uridylation of target pre-miRNAs. Uridylated pre-miRNAs fail to be processed by Dicer and undergo degradation.[UniProt]

Application Notes

Titration of the LIN28A antibody may be required due to differences in protocols and secondary/substrate sensitivity.

Immunogen

LIN28A recombinant protein was used to produce this monoclonal antibody.

Storage

Aliquot the LIN28A antibody and store frozen at -20oC or colder. Avoid repeated freeze-thaw cycles.