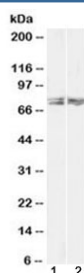


## LIMK2 Antibody (R36466)

Catalog No.	Formulation	Size
R36466-100UG	0.5 mg/ml in 1X TBS, pH7.3, with 0.5% BSA (US sourced) and 0.02% sodium azide	100 ug

[Bulk quote request](#)

Availability	1-3 business days
Species Reactivity	Human, Mouse, Rat, Pig
Format	Antigen affinity purified
Clonality	Polyclonal (goat origin)
Isotype	Goat Ig
Purity	Antigen affinity
UniProt	P53671
Gene ID	3985
Applications	Western Blot : 0.3-1ug/ml ELISA (peptide) LOD : 1:16000
Limitations	This LIMK2 antibody is available for research use only.



Western blot testing of 1) human HeLa and 2) mouse NIH3T3 lysate with LIMK2 antibody at 1ug/ml. Predicted molecular weight ~72 kDa (LIMK2a) and ~69 kDa (LIMK2b).



Western blot testing of rat pancreas lysate with LIMK2 antibody at 0.3ug/ml. Predicted molecular weight ~72 kDa (LIMK2a) and ~69 kDa (LIMK2b).

## Description

Additional name(s) for this target protein: LIM domain kinase 2

## Application Notes

Optimal dilution of the LIMK2 antibody should be determined by the researcher.

## Immunogen

Amino acids QVKEVNRMHISPN (181-193) were used as the immunogen for this LIMK2 antibody. This sequence is common to the a and b isoforms.

## Storage

Aliquot and store the LIMK2 antibody at -20oC.