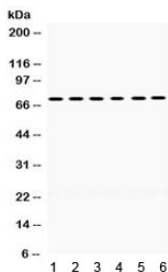


## LIMK2 Antibody / LIM Kinase 2 (R32136)

Catalog No.	Formulation	Size
R32136	0.5mg/ml if reconstituted with 0.2ml sterile DI water	100 ug

[Bulk quote request](#)

<b>Availability</b>	1-3 business days
<b>Species Reactivity</b>	Human, Mouse
<b>Format</b>	Antigen affinity purified
<b>Host</b>	Rabbit
<b>Clonality</b>	Polyclonal (rabbit origin)
<b>Isotype</b>	Rabbit IgG
<b>Purity</b>	Antigen affinity
<b>Buffer</b>	Lyophilized from 1X PBS with 2.5% BSA and 0.025% sodium azide
<b>UniProt</b>	P53671
<b>Applications</b>	Western Blot : 0.1-0.5ug/ml ELISA : 0.1-0.5ug/ml
<b>Limitations</b>	This LIMK2 antibody is available for research use only.



Western blot testing of mouse 1) brain, 2) liver, 3) thymus, 4) testis, 5) human 293 and 6) HeLa lysate with LIMK2 antibody. Expected/observed molecular weight ~72 kDa.

## Description

LIM domain kinase 2 is an enzyme that in humans is encoded by the LIMK2 gene. There are approximately 40 known eukaryotic LIM proteins, so named for the LIM domains they contain. LIM domains are highly conserved cysteine-rich structures containing 2 zinc fingers. Although zinc fingers usually function by binding to DNA or RNA, the LIM motif probably mediates protein-protein interactions. LIM kinase-1 and LIM kinase-2 belong to a small subfamily with a unique combination of 2 N-terminal LIM motifs and a C-terminal protein kinase domain. The protein encoded by this gene is phosphorylated and activated by ROCK, a downstream effector of Rho, and the encoded protein, in turn, phosphorylates

cofilin, inhibiting its actin-depolymerizing activity. It is thought that this pathway contributes to Rho-induced reorganization of the actin cytoskeleton. At least three transcript variants encoding different isoforms have been found for this gene.

## Application Notes

Optimal dilution of the LIMK2 antibody should be determined by the researcher.

## Immunogen

Amino acids KLEDSFEALSLYLGELGIPLPAELEELDHTVSMQYGLTRD of human LIM Kinase 2 were used as the immunogen for the LIMK2 antibody.

## Storage

After reconstitution, the LIMK2 antibody can be stored for up to one month at 4oC. For long-term, aliquot and store at -20oC. Avoid repeated freezing and thawing.