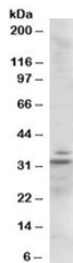


Lime Antibody (R33905)

Catalog No.	Formulation	Size
R33905-100UG	0.5 mg/ml in 1X TBS, pH7.3, with 0.5% BSA (US sourced) and 0.02% sodium azide	100 ug

[Bulk quote request](#)

Availability	1-3 business days
Species Reactivity	Mouse
Predicted Reactivity	Rat
Format	Antigen affinity purified
Host	Goat
Clonality	Polyclonal (goat origin)
Isotype	Goat Ig
Purity	Antigen affinity
Gene ID	72699
Applications	Western Blot : 0.5-2ug/ml ELISA (peptide) LOD : 1:128000
Limitations	This Lime antibody is available for research use only.



Western blot testing of mouse heart lysate with Lime antibody at 1 ug/ml. Predicted molecular weight: 31kDa.

Description

Additional name(s) for this target protein: Lck interacting transmembrane adaptor 1; Lime1

Application Notes

Optimal dilution of the Lime antibody should be determined by the researcher.

Immunogen

Amino acids ENVYESIKEMGL were used as the immunogen for this Lime antibody.

Storage

Aliquot and store the Lime antibody at -20oC.