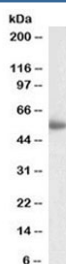


LILRA4 Antibody (R36457)

Catalog No.	Formulation	Size
R36457-100UG	0.5 mg/ml in 1X TBS, pH7.3, with 0.5% BSA (US sourced) and 0.02% sodium azide	100 ug

[Bulk quote request](#)

Availability	1-3 business days
Species Reactivity	Human
Format	Antigen affinity purified
Clonality	Polyclonal (goat origin)
Isotype	Goat Ig
Purity	Antigen affinity
UniProt	P59901
Gene ID	23547
Applications	Western Blot : 1-3ug/ml ELISA (peptide) LOD : 1:1000
Limitations	This LILRA4 antibody is available for research use only.



Western blot testing of human spleen lysate with LILRA4 antibody at 2ug/ml. Predicted molecular weight: 55 kDa.

Description

Additional name(s) for this target protein: Leukocyte immunoglobulin-like receptor, subfamily A (with TM domain), member 4 antibody; CD85g; ILT7

Application Notes

Optimal dilution of the LILRA4 antibody should be determined by the researcher.

Immunogen

Amino acids PRCSQEANSRKDN were used as the immunogen for this LILRA4 antibody.

Storage

Aliquot and store the LILRA4 antibody at -20oC.