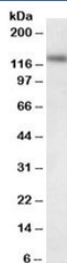


LIG1 Antibody (R35806)

Catalog No.	Formulation	Size
R35806-100UG	0.5 mg/ml in 1X TBS, pH7.3, with 0.5% BSA (US sourced) and 0.02% sodium azide	100 ug

[Bulk quote request](#)

Availability	1-3 business days
Species Reactivity	Human
Predicted Reactivity	Rat
Format	Antigen affinity purified
Host	Goat
Clonality	Polyclonal (goat origin)
Isotype	Goat Ig
Purity	Antigen affinity
Gene ID	3978
Applications	Western Blot : 0.1-0.3ug/ml ELISA (peptide) LOD : 1:16000
Limitations	This LIG1 antibody is available for research use only.



Western blot testing of HeLa nuclear lysate with LIG1 antibody at 0.1ug/ml. Predicted molecular weight: ~102kDa.

Description

Additional name(s) for this target protein: DNA ligase 1

Application Notes

Optimal dilution of the LIG1 antibody should be determined by the researcher.

Immunogen

Amino acids RVREDKQPEQATTS were used as the immunogen for this LIG1 antibody.

Storage

Aliquot and store the LIG1 antibody at -20oC.