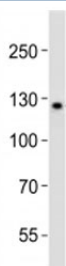


LIFR Antibody (F52984)

Catalog No.	Formulation	Size
F52984-0.4ML	In 1X PBS, pH 7.4, with 0.09% sodium azide	0.4 ml
F52984-0.08ML	In 1X PBS, pH 7.4, with 0.09% sodium azide	0.08 ml

[Bulk quote request](#)

Availability	1-3 business days
Species Reactivity	Human
Format	Antigen affinity purified
Host	Rabbit
Clonality	Polyclonal (rabbit origin)
Isotype	Rabbit Ig
Purity	Antigen affinity
UniProt	P42702
Applications	Western Blot : 1:1000
Limitations	This LIFR antibody is available for research use only.



Western blot analysis of lysate from K562 cell line using LIFR antibody diluted at 1:1000. Expected/observed molecular weight ~124/190kDa (unmodified/glycosylated).

Description

Signal-transducing molecule. May have a common pathway with IL6ST. The soluble form inhibits the biological activity of LIF by blocking its binding to receptors on target cells.

Application Notes

Titration of the LIFR antibody may be required due to differences in protocols and secondary/substrate sensitivity.

Immunogen

This LIFR antibody was produced from a rabbit immunized with a KLH conjugated synthetic peptide between 1021-1055 amino acids from the C-terminal region of human LIFR.

Storage

Aliquot the LIFR antibody and store frozen at -20oC or colder. Avoid repeated freeze-thaw cycles.

References (1)