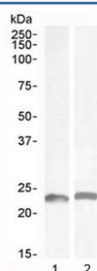


## LIF Antibody (R36251)

Catalog No.	Formulation	Size
R36251-100UG	0.5 mg/ml in 1X TBS, pH7.3, with 0.5% BSA (US sourced) and 0.02% sodium azide	100 ug

[Bulk quote request](#)

Availability	1-3 business days
Species Reactivity	Mouse, Rat
Predicted Reactivity	Human
Format	Antigen affinity purified
Clonality	Polyclonal (goat origin)
Isotype	Goat Ig
Purity	Antigen affinity
Gene ID	3976
Applications	Western Blot : 0.5-2ug/ml ELISA (peptide) LOD : 1:64000
Limitations	This LIF antibody is available for research use only.



Western blot testing of 1) mouse colon and 2) rat colon lysate with LIF antibody at 0.5ug/ml. Observed molecular weight ~23 kDa (unmodified), 32~62 kDa (glycosylated).

## Description

Additional name(s) for this target protein: Leukemia inhibitory factor

## Application Notes

Optimal dilution of the LIF antibody should be determined by the researcher.

## Immunogen

Amino acids TPVNATCAIRHP were used as the immunogen for this LIF antibody.

## **Storage**

Aliquot and store the LIF antibody at -20oC.