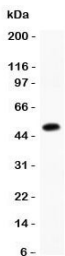


LIF Antibody (R31467)

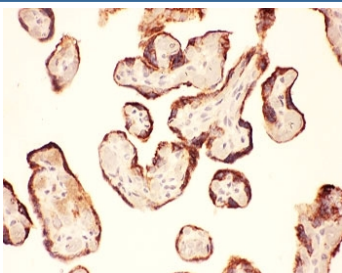
Catalog No.	Formulation	Size
R31467	0.5mg/ml if reconstituted with 0.2ml sterile DI water	100 ug

[Bulk quote request](#)

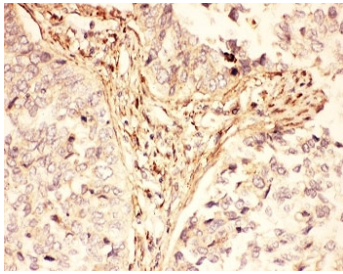
Availability	1-3 business days
Species Reactivity	Human
Format	Antigen affinity purified
Host	Rabbit
Clonality	Polyclonal (rabbit origin)
Isotype	Rabbit IgG
Purity	Antigen affinity
Buffer	Lyophilized from 1X PBS with 2.5% BSA and 0.025% sodium azide
Gene ID	3976
Applications	Western Blot : 0.5-1ug/ml IHC (FFPE) : 0.5-1ug/ml
Limitations	This LIF antibody is available for research use only.



Western blot testing of LIF antibody and recombinant human protein (0.5ng)



IHC-P: LIF antibody testing of human placenta tissue



IHC-P: LIF antibody testing of human lung cancer tissue

Description

LIF is a pleiotropic cytokine produced at the maternal-fetal interface which has been shown to play an essential role in implantation in mice. This gene is mapped to 22q11-q12.2, between the Philadelphia translocation BCR gene and the breakpoint of the translocation in cell line GM2324 at 22q12.2. LIF is produced in high amounts by the human endometrium and the trophoblast itself, and LIF receptors are present on cytotrophoblast cells. It could, thus, play a role in modulating HLA-G production and immune tolerance at the maternal-fetal interface.

Application Notes

Titration of the LIF antibody may be required due to differences in protocols and secondary/substrate sensitivity.

Immunogen

Human partial recombinant protein (AA 23-202) was used as the immunogen for this LIF antibody.

Storage

The lyophilized LIF antibody can be stored at 4°C to -20°C. After reconstitution, aliquot and store at -20°C. Avoid repeated freeze/thaws.