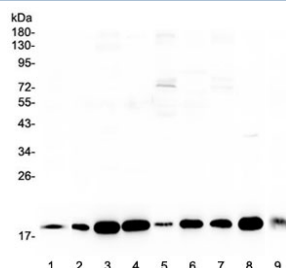


LIF Antibody / Leukemia inhibitory factor (RQ4084)

Catalog No.	Formulation	Size
RQ4084	0.5mg/ml if reconstituted with 0.2ml sterile DI water	100 ug

Bulk quote request

Availability	1-3 business days
Species Reactivity	Human, Mouse, Rat
Format	Antigen affinity purified
Clonality	Polyclonal (rabbit origin)
Isotype	Rabbit IgG
Purity	Antigen affinity purified
Buffer	Lyophilized from 1X PBS with 2% Trehalose and 0.025% sodium azide
UniProt	P09056
Applications	Western Blot : 0.5-1ug/ml ELISA (Capture) : 0.1-0.5ug/ml
Limitations	This LIF antibody is available for research use only.



Western blot testing of 1) rat brain, 2) rat heart, 3) rat liver, 4) rat kidney, 5) human HeLa, 6) human placenta, 7) human Jurkat, 8) mouse liver and 9) mouse kidney lysate with LIF antibody at 0.5ug/ml. Predicted molecular weight ~23 kDa (unmodified), 32-62 kDa (glycosylated).

Description

LIF is a pleiotropic cytokine produced at the maternal-fetal interface which has been shown to play an essential role in implantation in mice. This gene is mapped to 22q11-q12.2, between the Philadelphia translocation BCR gene and the breakpoint of the translocation in cell line GM2324 at 22q12.2. LIF is produced in high amounts by the human endometrium and the trophoblast itself, and LIF receptors are present on cytotrophoblast cells. LIF could, thus, play a role in modulating HLA-G production and immune tolerance at the maternal-fetal interface.

Application Notes

Optimal dilution of the LIF antibody should be determined by the researcher.

Immunogen

A recombinant mouse partial protein corresponding to amino acids S24-F203 was used as the immunogen for the LIF antibody.

Storage

After reconstitution, the LIF antibody can be stored for up to one month at 4°C. For long-term, aliquot and store at -20°C. Avoid repeated freezing and thawing.