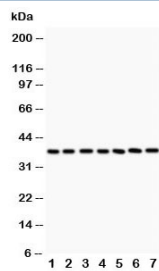


LIF Antibody / Leukemia inhibitory factor (R30639)

Catalog No.	Formulation	Size
R30639	0.5mg/ml if reconstituted with 0.2ml sterile DI water	100 ug

Bulk quote request

Availability	1-3 business days
Species Reactivity	Mouse, Rat
Format	Antigen affinity purified
Clonality	Polyclonal (rabbit origin)
Isotype	Rabbit IgG
Purity	Antigen affinity
Buffer	Lyophilized from 1X PBS with 2.5% BSA and 0.025% sodium azide/thimerosal
UniProt	P09056
Applications	Western Blot : 0.5-1ug/ml
Limitations	This LIF antibody is available for research use only.



Western blot testing of LIF antibody and Lane 1: rat intestine; 2: (r) brain; 3: (r) spleen; 4: (r) thymus; 5: mouse brain; 6: (m) kidney; 7: (m) liver. The 180 amino acid protein is heavily glycosylated and is routinely visualized from 32~62 KD.

Description

LIF is a pleiotropic cytokine produced at the maternal-fetal interface which has been shown to play an essential role in implantation in mice. It is produced in high amounts by the human endometrium and the trophoblast itself, and its receptors are present on cytotrophoblast cells. LIF could thus play a role in modulating HLA-G production and immune tolerance at the maternal-fetal interface. The gene maps to 22q11-q12.2, between the Philadelphia translocation BCR gene and the breakpoint of the translocation in cell line GM2324 at 22q12.2.

Application Notes

The stated application concentrations are suggested starting amounts. Titration of the LIF antibody may be required due

to differences in protocols and secondary/substrate sensitivity.

Immunogen

An amino acid sequence from the C-terminus of mouse LIF (DKEAFQRKKLGCQLLGTYKQ) was used as the immunogen for this LIF antibody (100% rat homology).

Storage

After reconstitution, the LIF antibody can be stored for up to one month at 4oC. For long-term, aliquot and store at -20oC. Avoid repeated freezing and thawing.