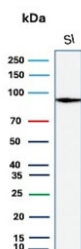


LI-Cadherin Antibody / Cadherin 17 [clone CDH17/2614] (V5639)

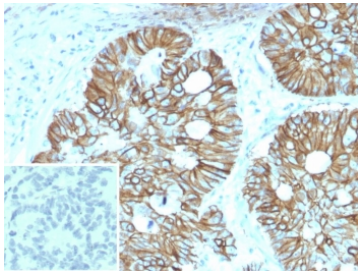
Catalog No.	Formulation	Size
V5639-100UG	0.2 mg/ml in 1X PBS with 0.1 mg/ml BSA (US sourced), 0.05% sodium azide	100 ug
V5639-20UG	0.2 mg/ml in 1X PBS with 0.1 mg/ml BSA (US sourced), 0.05% sodium azide	20 ug
V5639SAF-100UG	1 mg/ml in 1X PBS; BSA free, sodium azide free	100 ug

[Bulk quote request](#)

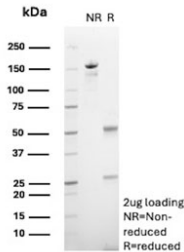
Availability	1-3 business days
Species Reactivity	Human
Format	Purified
Clonality	Monoclonal (mouse origin)
Isotype	Mouse IgG2b, kappa
Clone Name	CDH17/2614
Purity	Protein G affinity
UniProt	Q12864
Localization	Cell membrane
Applications	Immunohistochemistry (FFPE) : 1-2ug/ml Western Blot : 1-2ug/ml
Limitations	This Cadherin-17 antibody is available for research use only.



Western blot testing of human small intestine tissue lysate with LI-Cadherin antibody (clone CDH17/2614). Predicted molecular weight ~92 kDa but may be observed at higher molecular weights due to glycosylation.



IHC staining of FFPE human colon tissue with LI-Cadherin antibody (clone CDH17/2614). Inset: PBS used in place of primary Ab (secondary Ab negative control).
HIER: boil tissue sections in pH 9 10mM Tris with 1mM EDTA for 20 min and allow to cool before testing.



SDS-PAGE analysis of purified, BSA-free LI-Cadherin antibody (clone CDH17/2614) as confirmation of integrity and purity.

Description

Cadherin 17 (also known as LI Cadherin) is part of a family of Calcium-dependent adhesion molecules that function to mediate cell-cell binding critical to the maintenance of tissue structure and morphogenesis. LI-Cadherin (for liver-intestine-cadherin) expression is restricted to liver and intestine tissues and is specifically localized to the basolateral domain of hepatocytes and enterocytes.

Application Notes

Optimal dilution of the Cadherin-17 antibody should be determined by the researcher.

Immunogen

A portion of amino acids 200-500 from human Cadherin 17 protein was used as the immunogen for the Cadherin-17 antibody.

Storage

Aliquot the Cadherin-17 antibody and store frozen at -20oC or colder. Avoid repeated freeze-thaw cycles.