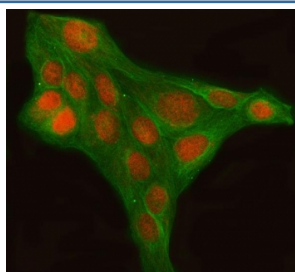


## LHX6 Antibody / LIM homeobox protein 6 (RQ8355)

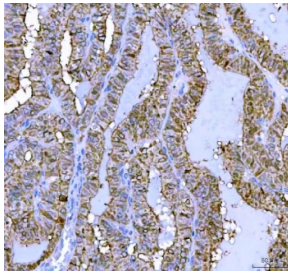
Catalog No.	Formulation	Size
RQ8355	0.5mg/ml if reconstituted with 0.2ml sterile DI water	100 ug

**Bulk quote request**

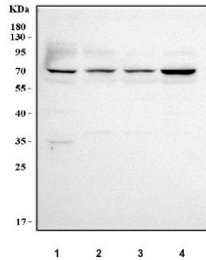
<b>Availability</b>	1-3 business days
<b>Species Reactivity</b>	Human
<b>Format</b>	Antigen affinity purified
<b>Clonality</b>	Polyclonal (rabbit origin)
<b>Isotype</b>	Rabbit IgG
<b>Purity</b>	Antigen affinity purified
<b>Buffer</b>	Lyophilized from 1X PBS with 2% Trehalose
<b>UniProt</b>	Q9UPM6
<b>Localization</b>	Nuclear
<b>Applications</b>	Western Blot : 0.5-1ug/ml Immunohistochemistry (FFPE) : 2-5ug/ml Immunofluorescence : 5ug/ml ELISA : 0.1-0.5ug/ml
<b>Limitations</b>	This LHX6 antibody is available for research use only.



Immunofluorescent staining of FFPE human U-2 OS cells with LHX6 antibody (red) and Beta Tubulin mAb (green). HIER: steam section in pH6 citrate buffer for 20 min.



IHC staining of FFPE human thyroid cancer tissue with LHX6 antibody. HIER: boil tissue sections in pH8 EDTA for 20 min and allow to cool before testing.



Western blot testing of human 1) HeLa, 2) 293T, 3) HepG2 and 4) Caco-2 cell lysate with LHX6 antibody. Predicted molecular weight: 38-43 kDa (multiple isoforms) but can be observed at higher molecular weights when complexed with PITX2.

## Description

LIM/homeobox protein Lhx6 is a protein that in humans is encoded by the LHX6 gene. This gene encodes a member of a large protein family that contains the LIM domain, a unique cysteine-rich zinc-binding domain. The encoded protein has tandem LIM domains as well as a DNA-binding homeodomain. The protein functions as a transcription factor involved in embryogenesis and head development and is highly expressed in neural crest derived mesenchyme cells. Alternative splicing results in multiple transcript variants encoding distinct isoforms.

## Application Notes

Optimal dilution of the LHX6 antibody should be determined by the researcher.

## Immunogen

An E.coli-derived human recombinant protein (C8-Y363) was used as the immunogen for the LHX6 antibody.

## Storage

After reconstitution, the LHX6 antibody can be stored for up to one month at 4oC. For long-term, aliquot and store at -20oC. Avoid repeated freezing and thawing.