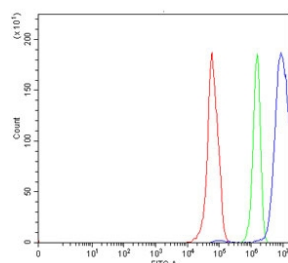


LHX4 Antibody / LIM homeobox protein 4 (RQ7091)

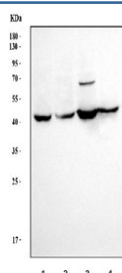
Catalog No.	Formulation	Size
RQ7091	0.5mg/ml if reconstituted with 0.2ml sterile DI water	100 ug

Bulk quote request

Availability	1-3 business days
Species Reactivity	Human
Format	Antigen affinity purified
Host	Rabbit
Clonality	Polyclonal (rabbit origin)
Isotype	Rabbit IgG
Purity	Antigen affinity purified
Buffer	Lyophilized from 1X PBS with 2% Trehalose
UniProt	Q969G2
Applications	Western Blot : 0.5-1ug/ml Flow Cytometry : 1-3ug/million cells Direct ELISA : 0.1-0.5ug/ml
Limitations	This LHX4 antibody is available for research use only.



Flow cytometry testing of human RT4 cells with LHX4 antibody at 1ug/million cells (blocked with goat sera); Red=cells alone, Green=isotype control, Blue= LHX4 antibody.



Western blot testing of human 1) HepG2, 2) HeLa, 3) A549 and 4) T-47D cell lysate with LHX4 antibody. Predicted molecular weight ~43 kDa.

Description

LIM/homeobox protein Lhx4 is a protein that in humans is encoded by the LHX4 gene. This gene encodes a member of a large protein family which contains the LIM domain, a unique cysteine-rich zinc-binding domain. The encoded protein is a transcription factor involved in the control of differentiation and development of the pituitary gland. Mutations in this gene cause combined pituitary hormone deficiency 4.

Application Notes

Optimal dilution of the LHX4 antibody should be determined by the researcher.

Immunogen

Recombinant human protein (amino acids S238-F390) was used as the immunogen for the LHX4 antibody.

Storage

After reconstitution, the LHX4 antibody can be stored for up to one month at 4oC. For long-term, aliquot and store at -20oC. Avoid repeated freezing and thawing.