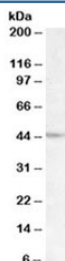


LHX2 Antibody (R34855)

Catalog No.	Formulation	Size
R34855-100UG	0.5 mg/ml in 1X TBS, pH7.3, with 0.5% BSA (US sourced) and 0.02% sodium azide	100 ug

[Bulk quote request](#)

Availability	1-3 business days
Species Reactivity	Human
Predicted Reactivity	Dog, Mouse, Rat
Format	Antigen affinity purified
Host	Goat
Clonality	Polyclonal (goat origin)
Isotype	Goat Ig
Purity	Antigen affinity
Gene ID	9355
Applications	Western Blot : 1-3ug/ml ELISA (peptide) LOD : 1:4000
Limitations	This LHX2 antibody is available for research use only.



Western blot testing of Daudi lysate with LHX2 antibody at 1ug/ml. Predicted molecular weight ~44kDa.

Description

Additional name(s) for this target protein: LIM homeobox 2 protein, LH2

Application Notes

Optimal dilution of the LHX2 antibody should be determined by the researcher.

Immunogen

Amino acids NLEGHEPHSPSQ were used as the immunogen for this LHX2 antibody.

Storage

Aliquot and store the LHX2 antibody at -20oC.