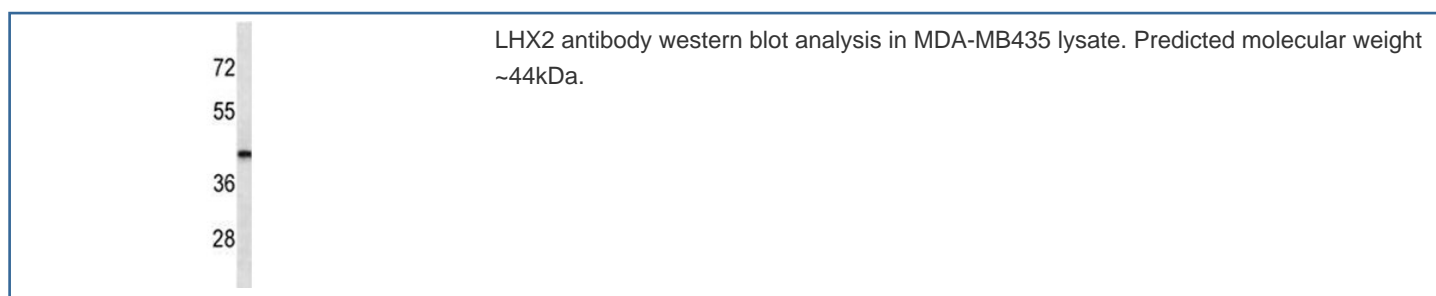


LHX2 Antibody [clone 285CT11.1.1] (F40281)

Catalog No.	Formulation	Size
F40281-0.4ML	In 1X PBS, pH 7.4, with 0.09% sodium azide	0.4 ml
F40281-0.08ML	In 1X PBS, pH 7.4, with 0.09% sodium azide	0.08 ml

[Bulk quote request](#)

Availability	1-3 business days
Species Reactivity	Human
Format	Purified
Clonality	Monoclonal (mouse origin)
Isotype	Mouse IgM, k
Clone Name	285CT11.1.1
Purity	Purified
UniProt	P50458
Applications	Western Blot : 1:100-1:250
Limitations	This LHX2 antibody is available for research use only.



Description

This gene encodes a protein belonging to a large protein family, members of which carry the LIM domain, a unique cysteine-rich zinc-binding domain. The encoded protein may function as a transcriptional regulator. The protein can recapitulate or rescue phenotypes in *Drosophila* caused by a related protein, suggesting conservation of function during evolution. [provided by RefSeq].

Application Notes

Titration of the LHX2 antibody may be required due to differences in protocols and secondary/substrate sensitivity.

Immunogen

This LHX2 antibody was produced from a mouse immunized with LHX2 recombinant protein.

Storage

Aliquot the LHX2 antibody and store frozen at -20oC or colder. Avoid repeated freeze-thaw cycles.