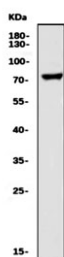


LHCGR Antibody / LHCG Receptor / GnRH Receptor (RQ6491)

Catalog No.	Formulation	Size
RQ6491	0.5mg/ml if reconstituted with 0.2ml sterile DI water	100 ug

Bulk quote request

Availability	1-3 business days
Species Reactivity	Human
Format	Antigen affinity purified
Clonality	Polyclonal (rabbit origin)
Isotype	Rabbit IgG
Purity	Affinity purified
Buffer	Lyophilized from 1X PBS with 2% Trehalose
UniProt	P22888
Applications	Western Blot : 1-2ug/ml Direct ELISA : 0.1-0.5ug/ml
Limitations	This LHCGR antibody is available for research use only.



Western blot testing of human HeLa cell lysate with LHCGR antibody. Expected molecular weight: 38-60 kDa but may be observed at higher molecular weights due to glycosylation.

Description

The luteinizing hormone/choriogonadotropin receptor is a member of a subfamily of G protein-coupled receptors (GPCR) characterized by the presence of a large N-terminal extracellular domain containing several leucine-rich repeats (LRR). This glycoprotein hormone receptor family has been named the LRR-containing GPCR (LGR) family. The LHCGR gene contains 11 exons and spans approximately 80 kb and it is mapped to chromosome 2p21. In the ovary, theca, stromal, late-stage (luteinizing) granulosa, and luteal cells contain LHCGR. In the testes, Leydig cells contain LHCGR.

Application Notes

Optimal dilution of the LHCGR antibody should be determined by the researcher.

Immunogen

An E. coli-derived human protein (amino acids Q67-N215) was used as the immunogen for the LHCGR antibody.

Storage

After reconstitution, the LHCGR antibody can be stored for up to one month at 4oC. For long-term, aliquot and store at -20oC. Avoid repeated freezing and thawing.