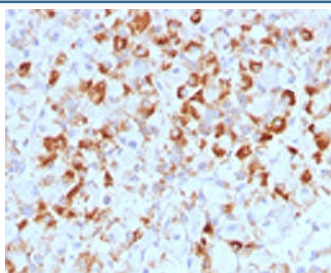


LHB Antibody / Luteinizing Hormone beta [clone CCGD1] (V7106)

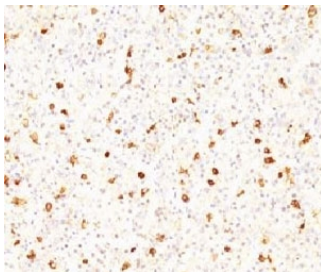
Catalog No.	Formulation	Size
V7106-100UG	0.2 mg/ml in 1X PBS with 0.1 mg/ml BSA (US sourced) and 0.05% sodium azide	100 ug
V7106-20UG	0.2 mg/ml in 1X PBS with 0.1 mg/ml BSA (US sourced) and 0.05% sodium azide	20 ug
V7106SAF-100UG	1 mg/ml in 1X PBS; BSA free, sodium azide free	100 ug

[Bulk quote request](#)

Availability	1-3 business days
Species Reactivity	Human
Format	Purified
Clonality	Monoclonal (mouse origin)
Isotype	Mouse IgG1, kappa
Clone Name	CCGD1
Purity	Protein G affinity chromatography
UniProt	P01229
Localization	Cytoplasmic, secreted
Applications	Immunohistochemistry (FFPE) : 1-2ug/ml for 30 min RT (1)
Limitations	This LHB antibody is available for research use only.



IHC testing of FFPE human pituitary with LHB antibody (clone CCGD1).



IHC testing of FFPE human pituitary with LHB antibody (clone CCGD1).

Description

Luteinizing Hormone beta/LHB is a member of the glycoprotein hormone beta chain family and encodes the beta subunit of luteinizing hormone (LH). Glycoprotein hormones are heterodimers consisting of a common alpha subunit and an unique beta subunit which confers biological specificity. LH is expressed in the pituitary gland and promotes spermatogenesis and ovulation by stimulating the testes and ovaries to synthesize steroids. LH is a useful marker in classification of pituitary tumors and the study of pituitary disease. [RefSeq]

Application Notes

Optimal dilution of the LHB antibody should be determined by the researcher.

1. Staining of formalin-fixed tissues requires boiling tissue sections in 10mM Citrate buffer, pH 6.0, for 10-20 min followed by cooling at RT for 20 min

Immunogen

Recombinant beta sub-unit of human LH was used as the immunogen for the LHB antibody.

Storage

Store the LHB antibody at 2-8°C (with azide) or aliquot and store at -20°C or colder (without azide).