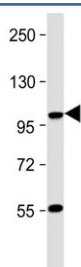


LGR5 Antibody / GPR49 (F48166)

Catalog No.	Formulation	Size
F48166-0.4ML	In 1X PBS, pH 7.4, with 0.09% sodium azide	0.4 ml
F48166-0.08ML	In 1X PBS, pH 7.4, with 0.09% sodium azide	0.08 ml

[Bulk quote request](#)

Availability	1-2 business days
Species Reactivity	Human
Format	Purified
Clonality	Polyclonal (rabbit origin)
Isotype	Rabbit Ig
Purity	Antigen affinity
UniProt	O75473
Applications	Western Blot : 1:500-1:1000
Limitations	This LGR5 antibody is available for research use only.



Western blot testing of mouse skeletal muscle tissue with LGR5 antibody. Predicted molecular weight ~100 kDa.

Description

LRG5 is a member of the G-protein coupled receptor (GPCR) family, which are cell surface receptors that play a key role in signal transduction. These receptors are involved in a wide range of physiological processes, including neurotransmission, hormone action, and immune response. What sets LRG5 apart is its unique structure, which contains leucine-rich repeats that are involved in protein-protein interactions. These repeats allow LRG5 to interact with a wide range of proteins, making it a central player in various signaling pathways. Studies have shown that LRG5 is involved in regulating cell proliferation, differentiation, and migration. It has also been linked to the development of various diseases, including cancer, neurodegenerative disorders, and cardiovascular diseases.

Application Notes

Titration of the LGR5 antibody may be required due to differences in protocols and secondary/substrate sensitivity.

Immunogen

A portion of amino acids 238-270 from the human protein was used as the immunogen for this LGR5 antibody.

Storage

Aliquot the LGR5 antibody and store frozen at -20oC or colder. Avoid repeated freeze-thaw cycles.