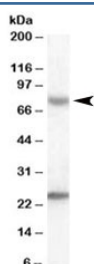


LGP2 Antibody / DHX58 (R33441)

Catalog No.	Formulation	Size
R33441-100UG	0.5 mg/ml in 1X TBS, pH7.3, with 0.5% BSA (US sourced) and 0.02% sodium azide	100 ug

[Bulk quote request](#)

Availability	1-3 business days
Species Reactivity	Human
Format	Antigen affinity purified
Clonality	Polyclonal (goat origin)
Isotype	Goat Ig
Purity	Antigen affinity
Gene ID	79132
Applications	Western Blot : 0.3-1ug/ml ELISA (peptide) LOD : 1:8000
Limitations	This LGP2 antibody is available for research use only.



Western blot testing of human liver lysate with LGP2 antibody at 0.3ug/ml. Predicted molecular weight: 77kDa. Both observed bands are blocked by addition of the immunizing peptide.

Description

Additional name(s) for this target protein: DEXH (Asp-Glu-X-His) box polypeptide 58; DHX58

Application Notes

Optimal dilution of the LGP2 antibody should be determined by the researcher.

Immunogen

Amino acids DFLQHCAENLSD were used as the immunogen for this LGP2 antibody.

Storage

Aliquot and store the LGP2 antibody at -20oC.