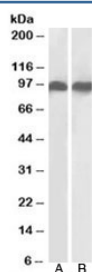


LFA-1 Antibody / CD18 (R34026)

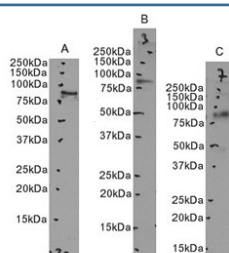
Catalog No.	Formulation	Size
R34026-100UG	0.5 mg/ml in 1X TBS, pH7.3, with 0.5% BSA (US sourced) and 0.02% sodium azide	100 ug

[Bulk quote request](#)

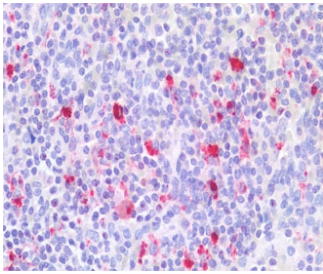
Availability	1-3 business days
Species Reactivity	Human
Format	Antigen affinity purified
Host	Goat
Clonality	Polyclonal (goat origin)
Isotype	Goat Ig
Purity	Antigen affinity
Gene ID	3689
Applications	Western Blot : 0.3-1ug/ml Immunohistochemistry (FFPE) : 5ug/ml ELISA (peptide) LOD : 1:128000
Limitations	This LFA-1 antibody is available for research use only.



Western blot testing of human A) K562 and B) U937 cell lysates with LFA-1 antibody at 0.3ug/ml. Predicted/observed molecular weight: 85~95 kDa depending on glycosylation level.



Western blot testing of human 1) U937, B) K562 and C) MOLT-4 cell lysates with LFA-1 antibody Predicted/observed molecular weight: 85~95 kDa depending on glycosylation level.



IHC staining of FFPE human spleen tissue with LFA-1 antibody at 5ug/ml. Required HIER: steamed antigen retrieval with pH6 citrate buffer; AP-staining.

Description

Additional name(s) for this target protein: Integrin beta 2; ITGB2; CD18 subunit of the LFA-1 heterdimer

Application Notes

Optimal dilution of the LFA-1 antibody should be determined by the researcher.

Immunogen

Amino acids ETQEDHNGGQKQLS from the CD18 subunit were used as the immunogen for this LFA-1 antibody.

Storage

Aliquot and store the LFA-1 antibody at -20oC.