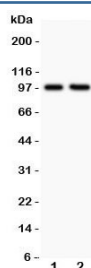


## LFA-1 Antibody / CD18 / ITGB2 (R31562)

Catalog No.	Formulation	Size
R31562	0.5mg/ml if reconstituted with 0.2ml sterile DI water	100 ug

**Bulk quote request**

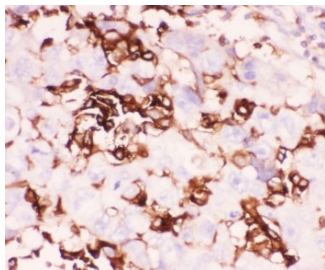
<b>Availability</b>	1-3 business days
<b>Species Reactivity</b>	Human
<b>Format</b>	Antigen affinity purified
<b>Host</b>	Rabbit
<b>Clonality</b>	Polyclonal (rabbit origin)
<b>Isotype</b>	Rabbit IgG
<b>Purity</b>	Antigen affinity
<b>Buffer</b>	Lyophilized from 1X PBS with 2.5% BSA and 0.025% sodium azide
<b>UniProt</b>	P05107
<b>Localization</b>	Cytoplasmic, membrane
<b>Applications</b>	Western Blot : 0.5-1ug/ml Immunohistochemistry (FFPE) : 2-5ug/ml Immunofluorescence : 5ug/ml
<b>Limitations</b>	This LFA-1 antibody is available for research use only.



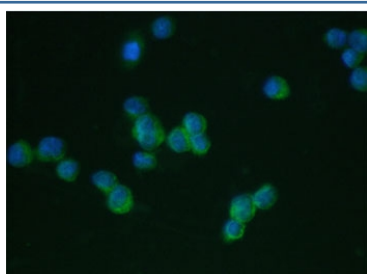
Immunofluorescent staining of human tonsil tissue with LFA-1 antibody (green) and DAPI nuclear counterstain (blue). HIER: boil tissue sections in pH6, 10mM citrate buffer, for 10-20 min followed by cooling at RT for 20 min.



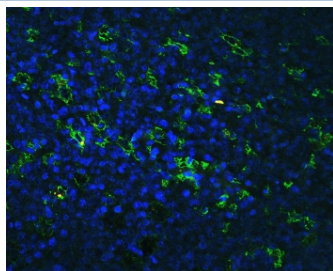
Immunofluorescent staining of human tonsil tissue with LFA-1 antibody (green) and DAPI nuclear counterstain (blue). HIER: boil tissue sections in pH6, 10mM citrate buffer, for 10-20 min followed by cooling at RT for 20 min.



IHC staining of FFPE human intestinal cancer tissue with LFA-1 antibody. HIER: boil tissue sections in pH8 EDTA for 20 min and allow to cool before testing.



IHC staining of FFPE human lung cancer tissue with LFA-1 antibody. HIER: boil tissue sections in pH8 EDTA for 20 min and allow to cool before testing.



Western blot testing of human 1) Jurkat and 2) HeLa cell lysate with LFA-1 antibody. Expected molecular weight: 85~95 kDa depending on glycosylation level.

## Description

Lymphocyte function associated antigen 1, also known as CD18, is a protein that in humans is encoded by the ITGB2 gene. It is an integrin protein that belongs to the class of cell membrane glycoproteins. The beta-2 integrin chain gene is designated ITGB2 and the leukocyte antigen has been designated LFA-1/CD18. The expression of LFA-1 is increased in lymphoblastoid cells from persons with Down syndrome, consistent with the location of the gene on chromosome 21. In humans lack of LFA-1 causes Leukocyte Adhesion Deficiency, a disease defined by a lack of leukocyte extravasation from blood into tissues. Although the protein is expressed on the cell surface at normal levels and is capable of function following extracellular stimulation, it could not be activated via the 'inside-out' signaling pathways.

## Application Notes

The stated application concentrations are suggested starting amounts. Titration of the LFA-1 antibody may be required due to differences in protocols and secondary/substrate sensitivity.

## Immunogen

Human partial recombinant protein (AA 404-769) was used as the immunogen for this LFA-1 antibody.

## Storage

After reconstitution, the LFA-1 antibody can be stored for up to one month at 4°C. For long-term, aliquot and store at -20°C. Avoid repeated freezing and thawing.