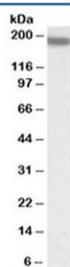


## LFA-1 Antibody / CD11a (R36394)

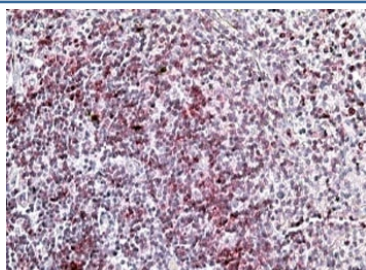
Catalog No.	Formulation	Size
R36394-100UG	0.5 mg/ml in 1X TBS, pH7.3, with 0.5% BSA (US sourced) and 0.02% sodium azide	100 ug

[Bulk quote request](#)

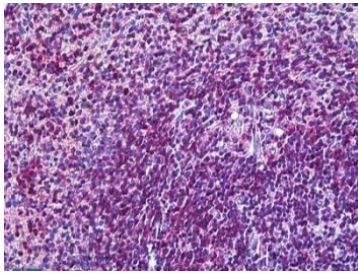
Availability	1-3 business days
Species Reactivity	Human
Format	Antigen affinity purified
Host	Goat
Clonality	Polyclonal (goat origin)
Isotype	Goat Ig
Purity	Antigen affinity
Gene ID	3683
Applications	Western Blot : 0.5-2ug/ml Immunohistochemistry (FFPE) : 2-6ug/ml Flow Cytometry : 10ug/ml ELISA (peptide) LOD : 1:16000
Limitations	This LFA-1 antibody is available for research use only.



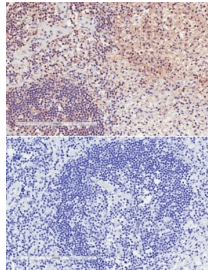
Western blot testing of human spleen lysate with LFA-1 antibody at 0.5ug/ml. Predicted molecular weight: ~129 kDa (unmodified), up to 200 kDa (glycosylated).



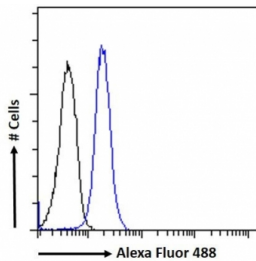
IHC staining of FFPE human spleen with LFA-1 antibody at 4ug/ml. HIER: steamed with pH6 citrate buffer, AP-staining.



IHC staining of FFPE human spleen with LFA-1 antibody at 3.75ug/ml. HIER: steamed with pH6 citrate buffer, AP-staining.



IHC staining of FFPE human lymph node with (top) and without (bottom) LFA-1 antibody at 2ug/ml. HIER: steamed with pH6 citrate buffer, HRP-staining.



FACS testing of fixed and permeabilized human ThP-1 cells with LFA-1 antibody (blue) at 10ug/ml and naive goat Ig (black).

## Description

Additional name(s) for this target protein: Lymphocyte function-associated antigen 1; CD11A; integrin alpha L (ITGAL); CD11a subunit of the LFA-1 heterdimer

## Application Notes

Optimal dilution of the LFA-1 antibody should be determined by the researcher.

## Immunogen

Amino acids YQVRIQPSIHDHN from the CD11a subunit were used as the immunogen for this LFA-1 antibody.

## Storage

Aliquot and store the LFA-1 antibody at -20oC.