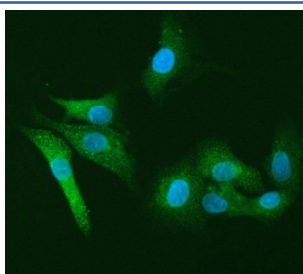


Leukocyte elastase inhibitor Antibody / LEI / SERPINB1 / PI-2 (RQ7629)

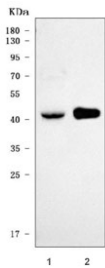
Catalog No.	Formulation	Size
RQ7629	0.5mg/ml if reconstituted with 0.2ml sterile DI water	100 ug

Bulk quote request

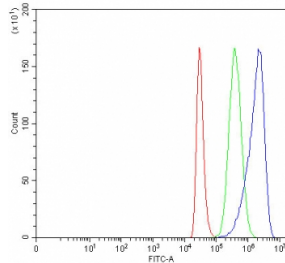
Availability	1-3 business days
Species Reactivity	Human
Format	Antigen affinity purified
Host	Rabbit
Clonality	Polyclonal (rabbit origin)
Isotype	Rabbit IgG
Purity	Antigen affinity purified
Buffer	Lyophilized from 1X PBS with 2% Trehalose
UniProt	P30740
Localization	Cytoplasmic
Applications	Western Blot : 0.5-1ug/ml Immunofluorescence : 5ug/ml Flow Cytometry : 1-3ug/million cells Direct ELISA : 0.1-0.5ug/ml
Limitations	This Leukocyte elastase inhibitor antibody is available for research use only.



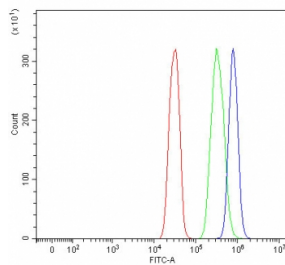
Immunofluorescent staining of FFPE human A549 cells with Leukocyte elastase inhibitor antibody (green) and DAPI nuclear stain (blue). HIER: steam section in pH6 citrate buffer for 20 min.



Western blot testing of human 1) HeLa and 2) U-937 cell lysate with Leukocyte elastase inhibitor antibody. Predicted molecular weight ~43 kDa.



Flow cytometry testing of human ThP-1 cells with Leukocyte elastase inhibitor antibody at 1ug/million cells (blocked with goat sera); Red=cells alone, Green=isotype control, Blue= Leukocyte elastase inhibitor antibody.



Flow cytometry testing of human SiHa cells with Leukocyte elastase inhibitor antibody at 1ug/million cells (blocked with goat sera); Red=cells alone, Green=isotype control, Blue= Leukocyte elastase inhibitor antibody.

Description

Leukocyte elastase inhibitor (LEI) also known as Serpin B1 and Peptidase inhibitor 2 (PI-2) is a protein that in humans is encoded by the SERPINB1 gene. The protein encoded by this gene is a member of the serpin family of proteinase inhibitors. Members of this family maintain homeostasis by neutralizing overexpressed proteinase activity through their function as suicide substrates. This protein inhibits the neutrophil-derived proteinases neutrophil elastase, cathepsin G, and proteinase-3 and thus protects tissues from damage at inflammatory sites. Alternative splicing results in multiple transcript variants.

Application Notes

Optimal dilution of the Leukocyte elastase inhibitor antibody should be determined by the researcher.

Immunogen

E. coli-derived recombinant human protein (amino acids A52-R275) was used as the immunogen for the Leukocyte elastase inhibitor antibody.

Storage

After reconstitution, the Leukocyte elastase inhibitor antibody can be stored for up to one month at 4oC. For long-term, aliquot and store at -20oC. Avoid repeated freezing and thawing.

