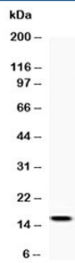


Leptin Antibody (R32843)

Catalog No.	Formulation	Size
R32843	0.5mg/ml if reconstituted with 0.2ml sterile DI water	100 ug

[Bulk quote request](#)

Availability	1-3 business days
Species Reactivity	Rat
Format	Antigen affinity purified
Host	Rabbit
Clonality	Polyclonal (rabbit origin)
Isotype	Rabbit IgG
Purity	Antigen affinity
Buffer	Lyophilized from 1X PBS with 2.5% BSA, 0.025% sodium azide
UniProt	P50596
Applications	Western Blot : 0.5-1ug/ml ELISA (recombinant Rat Protein) : 0.1-0.5ug/ml (BSA-free format available)
Limitations	This Leptin antibody is available for research use only.



Western blot testing of recombinant rat protein with Leptin antibody at 0.5ug/ml.
Predicted molecular weight ~16 kDa.

Description

Leptin has been found to be obese and diabetic-related and to have reduced activity, metabolism and body temperature. cDNA clones encoding Leptin have been isolated from human, simian, mouse, and rat cells. The expression of Leptin mRNA has been shown to be restricted to adipose tissue. Although regulation of fat stores is deemed to be the primary function of leptin, it also plays a role in other physiological processes, as evidenced by its multiple sites of synthesis other than fat cells, and the multiple cell types beside hypothalamic cells that have leptin receptors. Many of these additional functions are yet to be defined.

For broader metabolic and endocrine signaling research, see our [Leptin antibody product page](#) targeting the LEP adipokine pathway.

Application Notes

Optimal dilution of the Leptin antibody should be determined by the researcher.

Immunogen

A recombinant rat protein corresponding to amino acids V22-C167 was used as the immunogen for the Leptin antibody.

Storage

After reconstitution, the Leptin antibody can be stored for up to one month at 4oC. For long-term, aliquot and store at -20oC. Avoid repeated freezing and thawing.