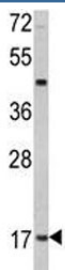


Leptin Antibody (F49458)

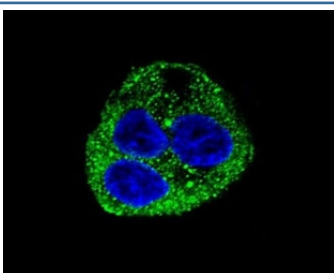
Catalog No.	Formulation	Size
F49458-0.4ML	In 1X PBS, pH 7.4, with 0.09% sodium azide	0.4 ml
F49458-0.08ML	In 1X PBS, pH 7.4, with 0.09% sodium azide	0.08 ml

[Bulk quote request](#)

Availability	1-3 business days
Species Reactivity	Human
Format	Purified
Host	Rabbit
Clonality	Polyclonal (rabbit origin)
Isotype	Rabbit Ig
Purity	Purified
UniProt	P41159
Applications	Western Blot : 1:1000 Immunofluorescence : 1:10-1:50
Limitations	This Leptin antibody is available for research use only.



Leptin Antibody MDA-MB-231 Cell WB. Western blot analysis of Leptin antibody MDA-MB-231 lysate. Predicted molecular weight ~16 kDa.



Leptin Antibody HepG2 Cell IF. Confocal immunofluorescent analysis of Leptin antibody with HepG2 cells followed by Alexa Fluor 488-conjugated goat anti-rabbit IgG (green). DAPI was used as a nuclear counterstain (blue).

Description

Leptin (LEP) is an adipocyte-secreted protein that regulates body fat and endocrine functions. Leptin is similar to the mouse obesity protein encoded by the obese gene (ob). In mouse studies, mutations in this gene are linked to severe and morbid obesity.

For broader metabolic and endocrine signaling research, see our [Leptin antibody product page](#) targeting the LEP adipokine pathway.

Application Notes

Titration of the Leptin antibody may be required due to differences in protocols and secondary/substrate sensitivity.

Immunogen

A portion of amino acids 134-166 from the human protein was used as the immunogen for this Leptin antibody.

Storage

Aliquot the Leptin antibody and store frozen at -20oC or colder. Avoid repeated freeze-thaw cycles.