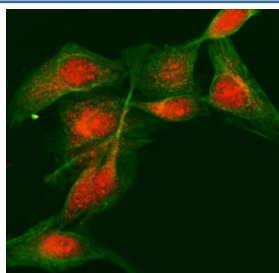


## LDOC1 Antibody / Leucine zipper protein down-regulated in cancer cells (RQ8485)

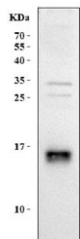
| Catalog No. | Formulation   | Size   |
|-------------|---|--------|
| RQ8485      | 0.5mg/ml if reconstituted with 0.2ml sterile DI water | 100 ug |

[Bulk quote request](#)

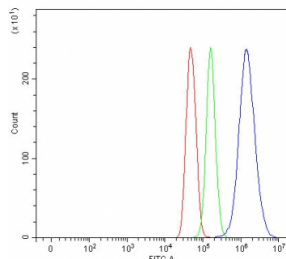
|                    |  |
|--------------------|--|
| Availability       | 1-3 days   |
| Species Reactivity | Human  |
| Format             | Antigen affinity purified  |
| Clonality          | Polyclonal (rabbit origin)   |
| Isotype            | Rabbit IgG   |
| Purity             | Antigen affinity purified  |
| Buffer             | Lyophilized from 1X PBS with 2% Trehalose  |
| UniProt            | O95751   |
| Localization       | Nuclear  |
| Applications       | Western Blot : 0.5-1ug/ml<br>Immunofluorescence : 5ug/ml<br>Flow Cytometry : 1-3ug/million cells<br>ELISA : 0.1-0.5ug/ml |
| Limitations        | This LDOC1 antibody is available for research use only.  |



Immunofluorescent staining of FFPE human HeLa cells with LDOC1 antibody (red) and Beta Tubulin mAb (green). HIER: steam section in pH6 citrate buffer for 20 min.



Western blot testing of human HeLa cell lysate with LDOC1 antibody. Predicted molecular weight ~17 kDa.



Flow cytometry testing of fixed and permeabilized human U-251 cells with LDOC1 antibody at 1ug/million cells (blocked with goat sera); Red=cells alone, Green=isotype control, Blue= LDOC1 antibody.

## Description

Protein LDOC1 is a protein that in humans is encoded by the LDOC1 gene. The protein encoded by this gene contains a leucine zipper-like motif and a proline-rich region that shares marked similarity with an SH3-binding domain. The protein localizes to the nucleus and is down-regulated in some cancer cell lines. It is thought to regulate the transcriptional response mediated by the nuclear factor kappa B (NF-kappaB). The gene has been proposed as a tumor suppressor gene whose protein product may have an important role in the development and/or progression of some cancers.

## Application Notes

Optimal dilution of the LDOC1 antibody should be determined by the researcher.

## Immunogen

An E.coli-derived human recombinant protein (amino acids H10-E140) was used as the immunogen for the LDOC1 antibody.

## Storage

After reconstitution, the LDOC1 antibody can be stored for up to one month at 4°C. For long-term, aliquot and store at -20°C. Avoid repeated freezing and thawing.