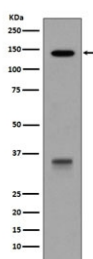


LDLR Antibody / LDL Receptor [clone BFC-12] (RQ4868)

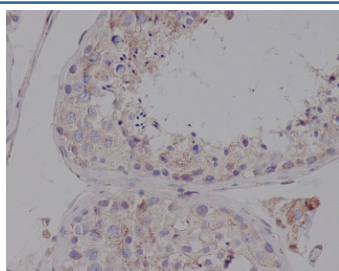
Catalog No.	Formulation	Size
RQ4868	Antibody in PBS with 0.02% sodium azide, 50% glycerol and 0.4-0.5mg/ml BSA	100 ul

[Bulk quote request](#)

Availability	1-2 weeks
Species Reactivity	Human
Format	Purified
Clonality	Rabbit Monoclonal
Isotype	Rabbit IgG
Clone Name	BFC-12
Purity	Affinity purified
UniProt	P01130
Localization	Cell membrane, cytoplasmic
Applications	Western Blot : 1:1000-1:2000 Immunohistochemistry (FFPE) : 1:50-1:200
Limitations	This LDLR antibody is available for research use only.



Western blot testing of human HepG2 cell lysate with LDLR antibody. Expected molecular weight: 95-160 kDa depending on glycosylation level.



IHC staining of FFPE human testis tissue with LDLR antibody. HIER: boil tissue sections in pH6, 10mM citrate buffer, for 10-20 min and allow to cool before testing.

Application Notes

Optimal dilution of the LDLR antibody should be determined by the researcher.

Immunogen

A synthetic peptide specific to human LDL Receptor / LDLR was used as the immunogen for the LDLR antibody.

Storage

Store the LDLR antibody at -20oC.