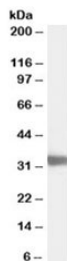


LDHC Antibody (R34514)

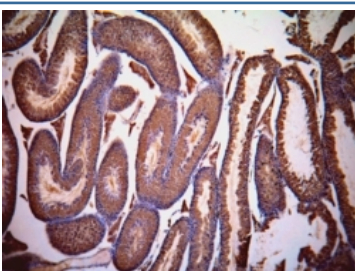
Catalog No.	Formulation	Size
R34514-100UG	0.5 mg/ml in 1X TBS, pH7.3, with 0.5% BSA (US sourced) and 0.02% sodium azide	100 ug

[Bulk quote request](#)

Availability	1-3 business days
Species Reactivity	Human, Mouse
Format	Antigen affinity purified
Host	Goat
Clonality	Polyclonal (goat origin)
Isotype	Goat Ig
Purity	Antigen affinity
Gene ID	3948
Applications	Western Blot : 0.03-0.1ug/ml Immunohistochemistry (FFPE) : suitable ELISA (peptide) LOD : 1:16000
Limitations	This LDHC antibody is available for research use only.



Western blot testing of mouse testis lysate with LDHC antibody at 0.03ug/ml. Predicted molecular weight: 36kDa.



IHC staining of FFPE mouse testis with LDHC antibody at 1ug/ml.

Description

Additional name(s) for this target protein: Lactate dehydrogenase C, LDH3, LDHX

Application Notes

Optimal dilution of the LDHC antibody should be determined by the researcher.

Immunogen

Amino acids KLGTDSDKEHWKNIH were used as the immunogen for this LDHC antibody.

Storage

Aliquot and store the LDHC antibody at -20oC.