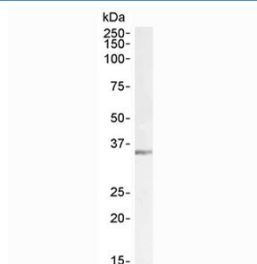


## LDHC Antibody (R33624)

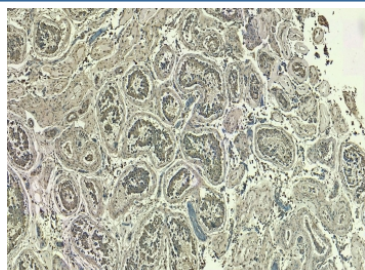
Catalog No.	Formulation	Size
R33624-100UG	0.5 mg/ml in 1X TBS, pH7.3, with 0.5% BSA (US sourced) and 0.02% sodium azide	100 ug

[Bulk quote request](#)

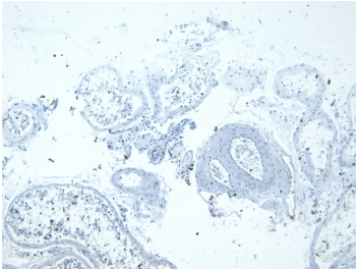
Availability	1-3 business days
Species Reactivity	Human, Mouse
Format	Antigen affinity purified
Clonality	Polyclonal (goat origin)
Isotype	Goat Ig
Purity	Antigen affinity
Gene ID	3948
Applications	Western Blot : 0.3-1ug/ml Immunohistochemistry (FFPE) : 5ug/ml ELISA (peptide) LOD : 1:1000
Limitations	This LDHC antibody is available for research use only.



Western blot testing of mouse testis lysate with LDHC antibody at 1ug/ml. Predicted molecular weight: 36 kDa.



IHC staining of FFPE human testis tissue with LDHC antibody at 5ug/ml. Required HIER: steamed antigen retrieval with pH6 citrate buffer; HRP-staining.



Negative control: IHC staining of FFPE human testis tissue without primary antibody.  
Required HIER: steamed antigen retrieval with pH6 citrate buffer; HRP-staining.

## Description

Additional name(s) for this target protein: Lactate dehydrogenase C

## Application Notes

Optimal dilution of the LDHC antibody should be determined by the researcher.

## Immunogen

Amino acids DSDKEHWKNVHKQ were used as the immunogen for this LDHC antibody.

## Storage

Aliquot and store the LDHC antibody at -20oC.