

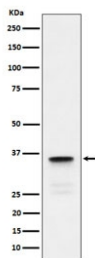
LDHC Antibody / Lactate Dehydrogenase C [clone 28L21] (RQ8310)

Catalog No.	Formulation	Size
RQ8310	Antibody in PBS with 0.02% sodium azide, 50% glycerol and 0.4-0.5mg/ml BSA	100 ul

Recombinant **RABBIT MONOCLONAL**

[Bulk quote request](#)

Availability	1-3 business days
Species Reactivity	Human
Format	Purified
Host	Rabbit
Clonality	Recombinant Rabbit Monoclonal
Isotype	Rabbit IgG
Clone Name	28L21
Purity	Affinity chromatography
UniProt	P07864
Applications	Western Blot : 1:500-1:2000
Limitations	This Lactate Dehydrogenase C antibody is available for research use only.



Western blot testing of human testis tissue lysate with LDHC antibody. Predicted molecular weight ~36 kDa.

Application Notes

Optimal dilution of the Lactate Dehydrogenase C antibody should be determined by the researcher.

Immunogen

A synthetic peptide derived from human Lactate Dehydrogenase C was used as the immunogen for the Lactate Dehydrogenase C antibody.

Storage

Store the Lactate Dehydrogenase C antibody at -20oC.