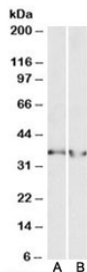


LDHB Antibody (R33745)

Catalog No.	Formulation	Size
R33745-100UG	0.5 mg/ml in 1X TBS, pH7.3, with 0.5% BSA (US sourced) and 0.02% sodium azide	100 ug

[Bulk quote request](#)

Availability	1-3 business days
Species Reactivity	Human
Format	Antigen affinity purified
Host	Goat
Clonality	Polyclonal (goat origin)
Isotype	Goat Ig
Purity	Antigen affinity
Gene ID	3945
Localization	Cytoplasmic, membranous
Applications	Western Blot : 0.3-1ug/ml ELISA (peptide) LOD : 1:4000
Limitations	This LDHB antibody is available for research use only.



Western blot testing of human heart [A] and human kidney [B] lysates with LDHB antibody at 0.3ug/ml. Predicted molecular weight: ~36kDa.

Description

Additional name(s) for this target protein: Lactate dehydrogenase B

Application Notes

Optimal dilution of the LDHB antibody should be determined by the researcher.

Immunogen

Amino acids EEATVPNNKIT were used as the immunogen for this LDHB antibody.

Storage

Aliquot and store the LDHB antibody at -20oC.