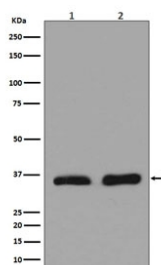


LDHA Antibody / Lactate Dehydrogenase [clone CFE-12] (RQ4831)

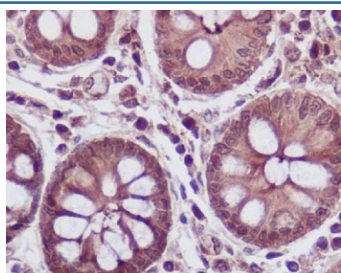
Catalog No.	Formulation	Size
RQ4831	Antibody in PBS with 0.02% sodium azide, 50% glycerol and 0.4-0.5mg/ml BSA	100 ul

[Bulk quote request](#)

Availability	1-2 weeks
Species Reactivity	Human
Format	Purified
Clonality	Rabbit Monoclonal
Isotype	Rabbit IgG
Clone Name	CFE-12
Purity	Affinity purified
UniProt	P00338
Localization	Cytoplasmic
Applications	Western Blot : 1:500-1:2000 Immunohistochemistry (FFPE) : 1:50-1:100
Limitations	This LDHA antibody is available for research use only.



Western blot testing of human 1) HeLa and 2) heart lysate with LDHA antibody. Predicted molecular weight ~36 kDa.



IHC staining of FFPE human colon tissue with LDHA antibody. HIER: boil tissue sections in pH6, 10mM citrate buffer, for 10-20 min and allow to cool before testing.

Description

The protein encoded by this gene catalyzes the conversion of L-lactate and NAD to pyruvate and NADH in the final step of anaerobic glycolysis. The protein is found predominantly in muscle tissue and belongs to the lactate dehydrogenase family. Mutations in this gene have been linked to exertional myoglobinuria. Multiple transcript variants encoding different isoforms have been found for this gene. [RefSeq]

Application Notes

Optimal dilution of the LDHA antibody should be determined by the researcher.

Immunogen

A synthetic peptide specific to human Lactate Dehydrogenase / LDHA was used as the immunogen for the LDHA antibody.

Storage

Store the LDHA antibody at -20oC.