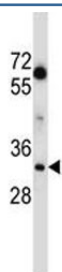


LDHA Antibody (F43050)

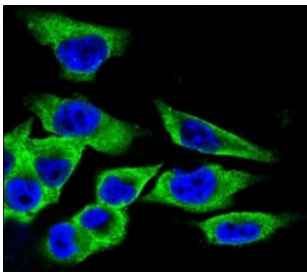
Catalog No.	Formulation	Size
F43050-0.4ML	In 1X PBS, pH 7.4, with 0.09% sodium azide	0.4 ml
F43050-0.08ML	In 1X PBS, pH 7.4, with 0.09% sodium azide	0.08 ml

[Bulk quote request](#)

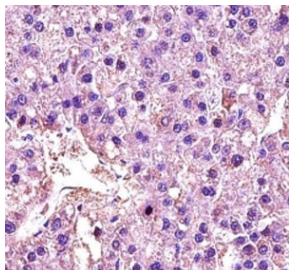
Availability	1-3 business days
Species Reactivity	Human
Predicted Reactivity	Primate
Format	Antigen affinity purified
Clonality	Polyclonal (rabbit origin)
Isotype	Rabbit Ig
Purity	Antigen affinity
UniProt	P00338
Localization	Cytoplasmic, nuclear
Applications	Western Blot : 1:1000 Immunofluorescence : 1:10-1:50 IHC (Paraffin) : 1:10-1:50
Limitations	This LDHA antibody is available for research use only.



LDHA antibody western blot analysis in MDA-MB231 lysate. Predicted molecular weight ~36kDa.



Confocal immunofluorescent analysis of LDHA antibody with A375 cells followed by Alexa Fluor 488-conjugated goat anti-rabbit IgG (green). DAPI was used as a nuclear counterstain (blue).



LDHA antibody immunohistochemistry analysis in formalin fixed and paraffin embedded human hepatocarcinoma

Description

The protein encoded by this gene catalyzes the conversion of L-lactate and NAD to pyruvate and NADH in the final step of anaerobic glycolysis. The protein is found predominantly in muscle tissue and belongs to the lactate dehydrogenase family. Mutations in this gene have been linked to exertional myoglobinuria. Multiple transcript variants encoding different isoforms have been found for this gene. The human genome contains several non-transcribed pseudogenes of this gene.

Application Notes

Titration of the LDHA antibody may be required due to differences in protocols and secondary/substrate sensitivity.

Immunogen

A portion of amino acids 204-232 from the human protein was used as the immunogen for this LDHA antibody.

Storage

Aliquot the LDHA antibody and store frozen at -20oC or colder. Avoid repeated freeze-thaw cycles.