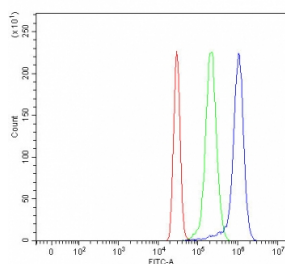


## LCTL Antibody / Lactase-like protein (RQ8560)

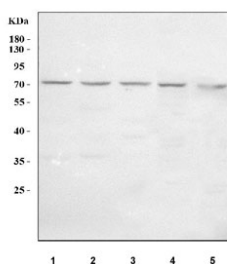
Catalog No.	Formulation	Size
RQ8560	0.5mg/ml if reconstituted with 0.2ml sterile DI water	100 ug

**Bulk quote request**

<b>Availability</b>	1-3 days
<b>Species Reactivity</b>	Human, Mouse, Rat
<b>Format</b>	Antigen affinity purified
<b>Clonality</b>	Polyclonal (rabbit origin)
<b>Isotype</b>	Rabbit IgG
<b>Purity</b>	Antigen affinity purified
<b>Buffer</b>	Lyophilized from 1X PBS with 2% Trehalose
<b>UniProt</b>	Q6UWM7
<b>Applications</b>	Western Blot : 0.5-1ug/ml Flow Cytometry : 1-3ug/million cells ELISA : 0.1-0.5ug/ml
<b>Limitations</b>	This LCTL antibody is available for research use only.



Flow cytometry testing of fixed and permeabilized human HepG2 cells with LCTL antibody at 1ug/million cells (blocked with goat sera); Red=cells alone, Green=isotype control, Blue= LCTL antibody.



Western blot testing of 1) human A549, 2) human A431, 3) human MCF7, 4) rat C6 and 5) mouse Neuro-2a cell lysate with LCTL antibody. Predicted molecular weight ~65 kDa but may be observed at higher molecular weights due to glycosylation.

## Description

Lactase-like is a protein that in humans is encoded by the LCTL gene. This gene encodes a member of family 1 glycosidases. Glycosidases are enzymes that hydrolyze glycosidic bonds and are classified into families based on primary amino acid sequence. Most members of family 1 have two conserved glutamic acid residues, which are required for enzymatic activity. The mouse ortholog of this protein has been characterized and has a domain structure of an N-terminal signal peptide, glycosidase domain, transmembrane domain, and a short cytoplasmic tail. It lacks one of the conserved glutamic acid residues important for catalysis, and its function remains to be determined (PMID: 12084582). Alternative splicing results in multiple transcript variants.

## Application Notes

Optimal dilution of the LCTL antibody should be determined by the researcher.

## Immunogen

An E.coli-derived human recombinant protein (amino acids D67-Q537) was used as the immunogen for the LCTL antibody.

## Storage

After reconstitution, the LCTL antibody can be stored for up to one month at 4oC. For long-term, aliquot and store at -20oC. Avoid repeated freezing and thawing.