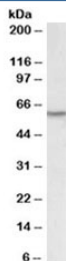


LCK Antibody (R35690)

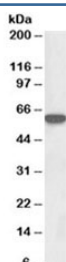
Catalog No.	Formulation	Size
R35690-100UG	0.5 mg/ml in 1X TBS, pH7.3, with 0.5% BSA (US sourced) and 0.02% sodium azide	100 ug

[Bulk quote request](#)

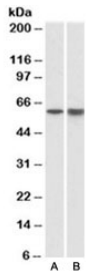
Availability	1-3 business days
Species Reactivity	Human, Rat, Pig
Predicted Reactivity	Mouse, Dog, Cow
Format	Antigen affinity purified
Host	Goat
Clonality	Polyclonal (goat origin)
Isotype	Goat Ig
Purity	Antigen affinity
Gene ID	3932
Applications	Western Blot : 0.1-0.3ug/ml ELISA (peptide) LOD : 1:16000
Limitations	This LCK antibody is available for research use only.



LCK Antibody Thymus WB. Western blot testing of human thymus lysate with LCK antibody at 0.1ug/ml. Predicted molecular weight ~58 kDa.



LCK Antibody Rat Thymus WB. Western blot of rat thymus lysate with LCK antibody at 0.3ug/ml.



LCK Antibody Pig Bone Marrow Spleen WB. Western blot of pig bone marrow (A) and spleen (B) lysates with LCK antibody at 1ug/ml.

Description

Additional name(s) for this target protein: Lymphocyte cell-specific protein tyrosine kinase

Learn more about LCK function in T-cell receptor signaling, lymphocyte activation, adaptive immunity, and immune signal transduction on our [LCK Antibody](#) page.

Application Notes

Optimal dilution of the LCK antibody should be determined by the researcher.

Immunogen

Amino acids RNGSEVRDPLVTYE were used as the immunogen for this LCK antibody.

Storage

Aliquot and store the LCK antibody at -20oC.