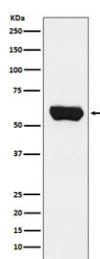


## LCK Antibody [clone ADBE-12] (RQ5136)

Catalog No.	Formulation	Size
RQ5136	Antibody in PBS with 0.02% sodium azide, 50% glycerol and 0.4-0.5mg/ml BSA	100 ul

[Bulk quote request](#)

Availability	1-2 weeks
Species Reactivity	Human
Format	Purified
Host	Rabbit
Clonality	Rabbit Monoclonal
Isotype	Rabbit IgG
Clone Name	ADBE-12
Purity	Affinity purified
UniProt	P06239
Applications	Western Blot : 1:500-1:1000
Limitations	This LCK antibody is available for research use only.



Western blot testing of human Jurkat cell lysate with LCK antibody. Predicted molecular weight ~58 kDa.

## Description

This gene is a member of the Src family of protein tyrosine kinases (PTKs). The encoded protein is a key signaling molecule in the selection and maturation of developing T-cells. It contains N-terminal sites for myristylation and palmitoylation, a PTK domain, and SH2 and SH3 domains which are involved in mediating protein-protein interactions with phosphotyrosine-containing and proline-rich motifs, respectively. The protein localizes to the plasma membrane and pericentrosomal vesicles, and binds to cell surface receptors, including CD4 and CD8, and other signaling molecules. Multiple alternatively spliced variants encoding different isoforms have been described. [RefSeq]

## **Application Notes**

Optimal dilution of the LCK antibody should be determined by the researcher.

## **Immunogen**

A synthetic peptide specific to human LCK was used as the immunogen for the LCK antibody.

## **Storage**

Store the LCK antibody at -20oC.