

LC3B Antibody (F46116)

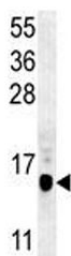
Catalog No.	Formulation	Size
F46116-0.4ML	In 1X PBS, pH 7.4, with 0.09% sodium azide	0.4 ml
F46116-0.08ML	In 1X PBS, pH 7.4, with 0.09% sodium azide	0.08 ml

[Bulk quote request](#)

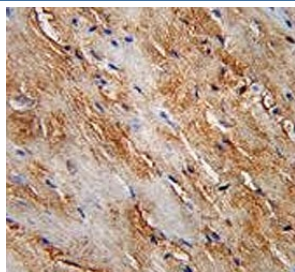
Availability	1-3 business days
Species Reactivity	Human, Mouse
Format	Antigen affinity purified
Clonality	Polyclonal (rabbit origin)
Isotype	Rabbit Ig
Purity	Antigen affinity
UniProt	Q9GZQ8
Applications	Western Blot : 1:1000 IHC (Paraffin) : 1:50-1:100 Flow Cytometry : 1:10-1:50
Limitations	This LC3B antibody is available for research use only.



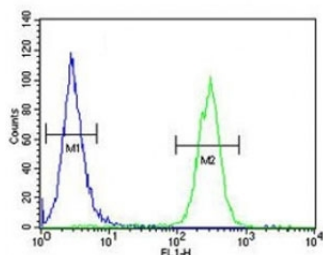
Western blot analysis of LC3B antibody and MCF-7 lysate



LC3B antibody western blot analysis in mouse cerebellum tissue lysate



LC3B antibody immunohistochemistry analysis in formalin fixed and paraffin embedded human skeletal muscle.



LC3B antibody flow cytometric analysis of MCF-7 cells (right histogram) compared to a negative control cell (left histogram). FITC-conjugated goat-anti-rabbit secondary Ab was used for the analysis.

Description

The product of this gene is a subunit of neuronal microtubule-associated MAP1A and MAP1B proteins, which are involved in microtubule assembly and important for neurogenesis. Studies on the rat homolog implicate a role for this gene in autophagy, a process that involves the bulk degradation of cytoplasmic component.

Application Notes

Titration of the LC3B antibody may be required due to differences in protocols and secondary/substrate sensitivity.

Immunogen

A portion of amino acids 74-106 (containing T93/Y99) from the human protein was used as the immunogen for this LC3B antibody.

Storage

Aliquot the LC3B antibody and store frozen at -20oC or colder. Avoid repeated freeze-thaw cycles.