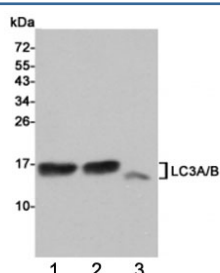


LC3A/B Antibody [clone 3E9-E5-C9] (F54060)

Catalog No.	Formulation	Size
F54060-0.1ML	In PBS with 50% glycerol and 0.03% ProClin 300	0.1 ml

[Bulk quote request](#)

Availability	1-3 business days
Species Reactivity	Human, Rat
Format	Purified
Host	Mouse
Clonality	Monoclonal (mouse origin)
Isotype	Mouse IgG2b
Clone Name	3E9-E5-C9
Purity	Protein G affinity
UniProt	Q9H492, Q9GZQ8
Applications	Western Blot : 1:1000
Limitations	This LC3A/B antibody is available for research use only.



Western blot testing of 1) rat cerebral cortex, 2) rat brain and 3) human HeLa cell lysates using LC3A/B antibody at 1:1000. Predicted molecular weight: ~14 kDa (LC3A) and ~15 kDa (LC3B).

Description

LC3A is a Ubiquitin-like modifier involved in formation of autophagosomal vacuoles (autophagosomes). Whereas LC3s are involved in elongation of the phagophore membrane, the GABARAP/GATE-16 subfamily is essential for a later stage in autophagosome maturation. [UniProt]

LC3B is a Ubiquitin-like modifier involved in formation of autophagosomal vacuoles (autophagosomes). Plays a role in mitophagy which contributes to regulate mitochondrial quantity and quality by eliminating the mitochondria to a basal level to fulfill cellular energy requirements and preventing excess ROS production. Whereas LC3s are involved in elongation of

the phagophore membrane, the GABARAP/GATE-16 subfamily is essential for a later stage in autophagosome maturation. Promotes primary ciliogenesis by removing OFD1 from centriolar satellites via the autophagic pathway. [UniProt]

Application Notes

The stated application concentrations are suggested starting points. Titration of the LC3A/B antibody may be required due to differences in protocols and secondary/substrate sensitivity.

Immunogen

A synthetic LC3B peptide was used as the immunogen for this LC3A/B antibody.

Storage

Store the LC3A/B antibody at -20oC.