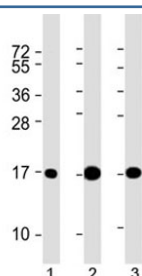


LC3A Antibody (MAP1LC3A) [clone 166AT1234] (F40209)

Catalog No.	Formulation	Size
F40209-0.2ML	In 1X PBS, pH 7.4, with 0.09% sodium azide	0.2 ml
F40209-0.05ML	In 1X PBS, pH 7.4, with 0.09% sodium azide	0.05 ml

[Bulk quote request](#)

Availability	1-3 business days
Species Reactivity	Human, Mouse, Rat
Format	Purified
Host	Mouse
Clonality	Monoclonal (mouse origin)
Isotype	Mouse IgG1, k
Clone Name	166AT1234
Purity	Purified
UniProt	Q9H492
Applications	Western Blot : 1:1000-1:2000
Limitations	This LC3 antibody is available for research use only.



Western blot testing of 1) human brain, 2) mouse brain and 3) rat brain lysate with LC3 antibody at 1:2000. Predicted molecular weight ~14 kDa.

Description

The LC3A antibody is a critical reagent used to study the structure and biological role of LC3A Antibody (MAP1LC3A). This protein belongs to a family of molecules that regulate cellular processes including growth, communication, and stress response. Researchers rely on the LC3A antibody to highlight localization patterns across tissue types and evaluate expression changes under disease conditions.

In functional studies, the LC3A antibody has been applied in western blot, immunohistochemistry, and immunofluorescence, providing reliable signal detection. The specificity of this reagent makes it useful for distinguishing isoform activity and post-translational modifications. Because LC3A Antibody (MAP1LC3A) interacts with a variety of cellular partners, its antibody is often employed in pathway analysis and co-immunoprecipitation experiments.

NSJ Bioreagents provides the LC3A antibody to support investigators who need consistent results across multiple assay platforms. By targeting key epitopes, this antibody allows scientists to investigate protein distribution, changes in phosphorylation state, or altered regulation during pathological progression. The LC3A antibody therefore remains essential for modern biomedical research.

Application Notes

Titration of the LC3 antibody may be required due to differences in protocols and secondary/substrate sensitivity.

Immunogen

This LC3 antibody was produced from a mouse immunized with a full length recombinant protein of human LC3A/MAP1LC3A.

Storage

Aliquot the LC3 antibody and store frozen at -20oC or colder. Avoid repeated freeze-thaw cycles.